

CapitaLand
凯德



One
Pearl
Bank
万宝轩

人生至乐，
莫不如此。

一方水土，万种风情。

承载着多少人的生活梦想，
营造出一处舒适怡人的暖心空间。



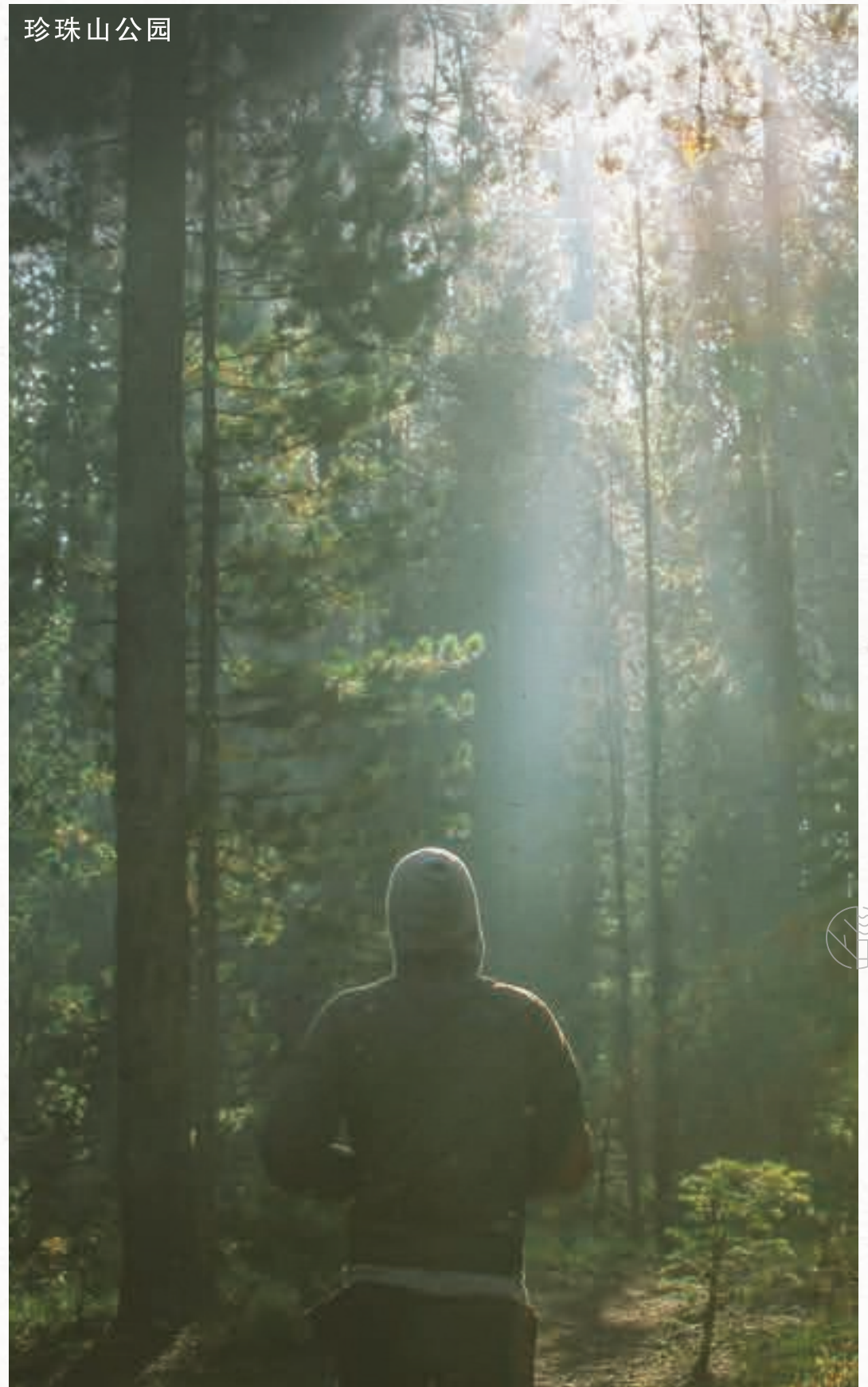
我们细品生活意趣，感悟幸福真谛。



放逐心情思绪，塑造完整人生。



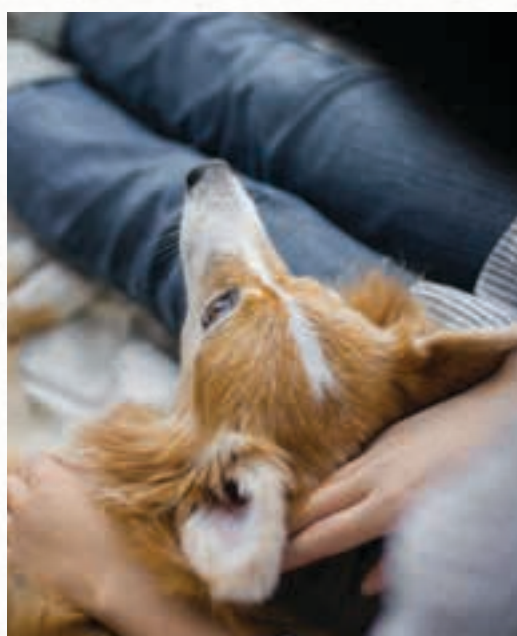
珍珠山公园



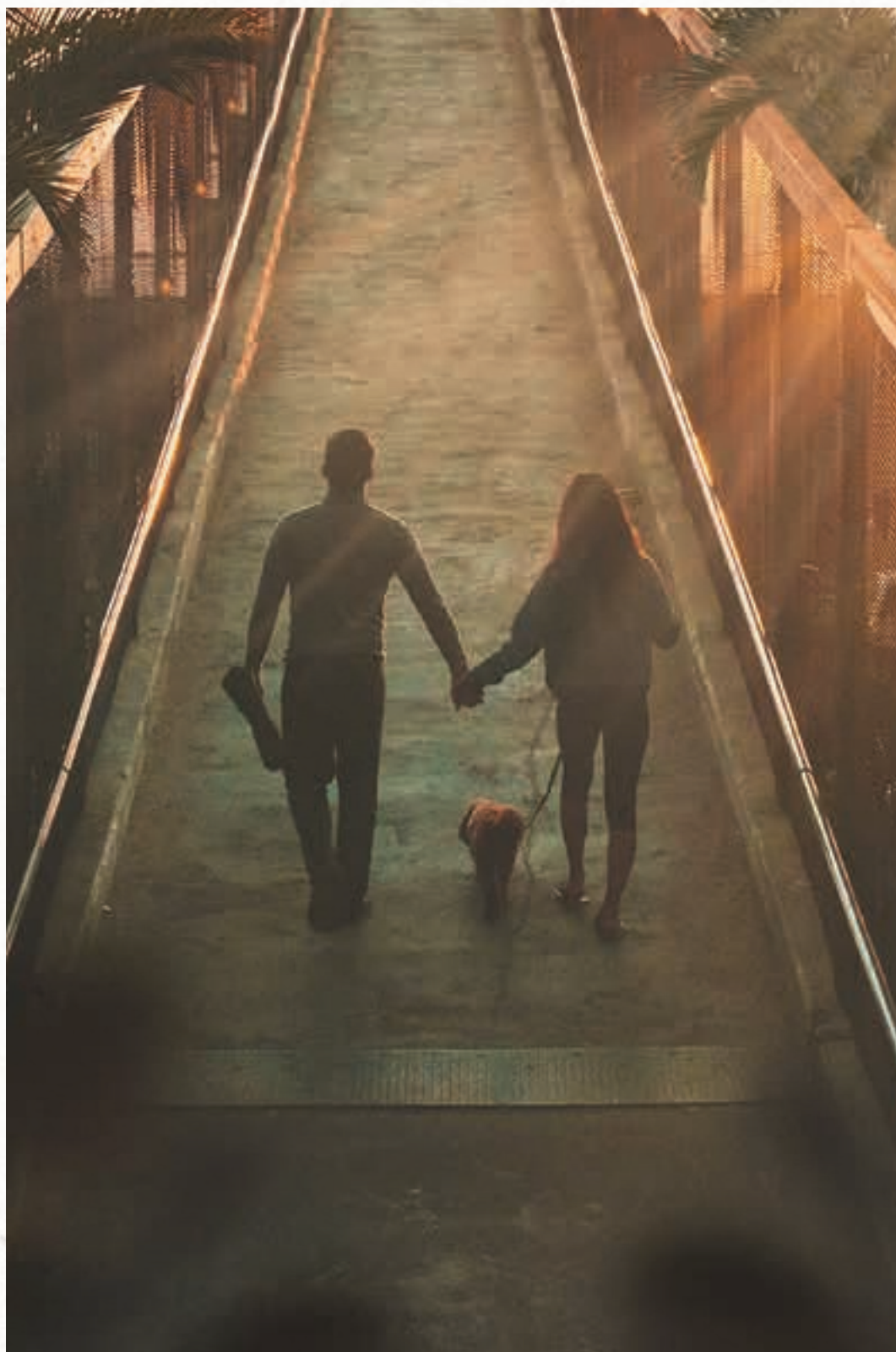
享受当下身心灵的健康、快乐、安宁。



生活唯此足矣。



一方天地，万般惬意。
幸福在此留下印记。

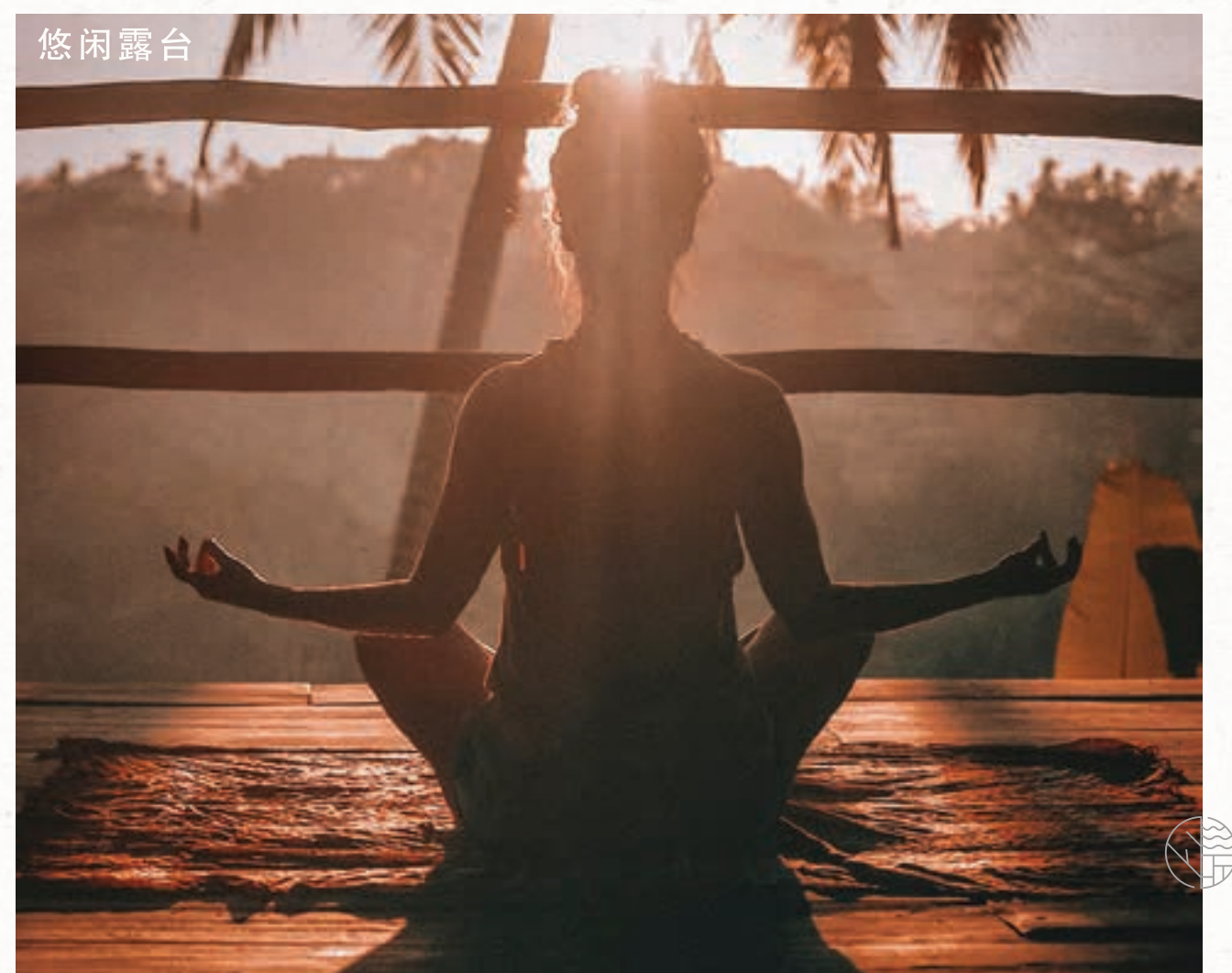


一抹绿意，
抚慰都市人的身心灵。



一池清波，漾起炎夏里的小清新。





一举手一投足，
在自我疗愈的空间里发现生活正能量。



一方瑰宝，万里晴空。



扎根于此，莳花弄草植树养绿；
孕育生机旺盛社区。



交流露台



天空花园



效果图

远眺俯瞰，城市全景一览无遗，
无限风光尽收眼底。



高端精美装潢，现代奢华内饰
开启一室舒居生活，恭候住户随时入伙。



如此闲适放松，如此
怡然自得。



One Pearl Bank
万宝轩

万事静好

人间至美

舒适商圈，
近在咫尺。



美食荟萃

5分钟步程

中峇鲁
恭锡街
武吉巴梳
牛车水

交通枢纽

5分钟步程/车程

欧南园地铁转换站设有3条地铁路线
中央快速公路/亚逸拉惹快速公路/
泛岛快速公路
加冷巴耶利峇快速公路/东海岸公园大道

距离25分钟车程

中央商业区/滨海湾(15分钟)
乌节路(10分钟)
樟宜机场/星耀樟宜(25分钟)

休闲天地

距离10分钟车程

滨海湾花园
圣淘沙
滨海湾金沙
珍珠山公园
福康宁公园

文创地标

距离10分钟车程

国家博物馆
国家美术馆
亚洲文明博物馆
滨海艺术中心



生活机能:

- 中央商业区
- 医疗中心
- 文艺专区
- 滨海市区线
- 地铁环线
- 东北线
- 东西线
- 南北线
- 汤申 — 东海岸线
- 工作
- 餐饮
- 零售
- 休闲娱乐



空间设施：

- Ⓐ 人行入口
- Ⓑ 生态池
- Ⓒ 地下2楼入口处
- Ⓓ 户外凉亭
- Ⓔ 游泳池
- Ⓕ 健体池
- Ⓖ 水力按摩池
- Ⓗ 泳池躺椅
- Ⓘ 烧烤区
- Ⓙ 儿童嬉水池
- Ⓚ 儿童游乐区
- Ⓛ 聚会厅
- Ⓜ 曲径步道
- Ⓝ 保健园地
- Ⓞ 公园入口
- Ⓟ 游乐场
- Ⓠ 宠物区
- Ⓡ 主入口
- Ⓢ 空中花园
(每4层楼设有一圃)
- Ⓣ 服务专区(底层)
- 电机房
- Ⓣ₁ 服务专区(地下层)
- 垃圾收集处
- 分电站



悠闲露台(第14层)

- A 映水池
- B 户外休闲区
- C 瑜伽平台
- D 运动园地
- E 冥想空间

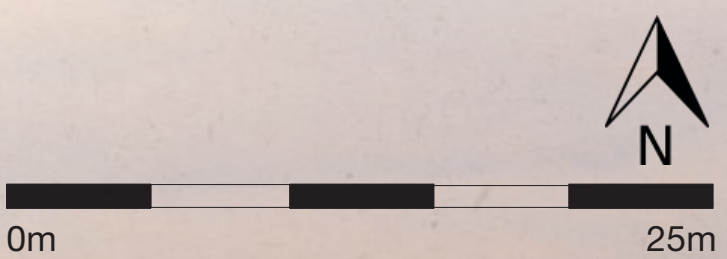
交流露台(第18层)

- F 户外休闲区
- G 户外聚餐区
- H 露天剧场
- I 休闲交流区
- J 更衣室



市区

公园



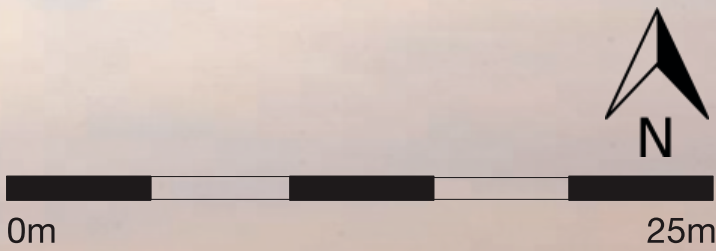
天空花园(第39层)

户外空间

- A 户外聚餐区
- B 天空之桥
- C 观景草坪
- D 园艺区
- E 空中步道
- F 户外健身区
- G 户外休闲区

室内空间

- H 更衣室
- I 健身房
- J 盥洗室
- K 聚会厅
- L 美食厨房
- M 社交俱乐部



单位分布

空间设施

Type A – STUDIO
Type B – 1 BEDROOM
Type C – 2 BEDROOM
Type D – 3 BEDROOM
Type E – 4 BEDROOM
Type F – PENTHOUSE

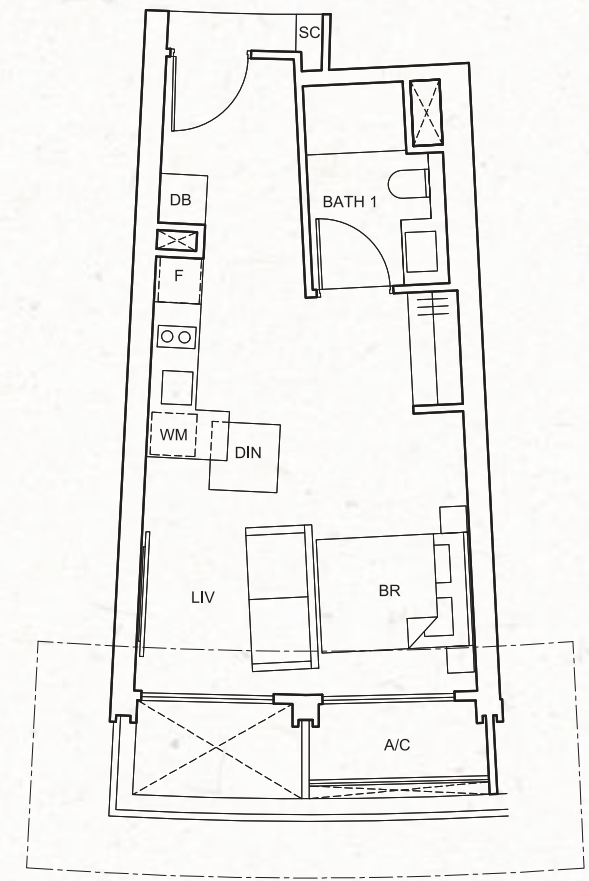
Storey/ Unit No.	1	2	3	4	5	6	7	8	9	10	11
39	天空花园										
38	F4			F3							
37	D1-c	A1-b (m)	A1-b	C1-c	C1-c (m)	C2-c	D2-c	D3-c	B1-b	B2-b	C3-c
36	D1-b	A1-b (m)	A1-b	C1-b	C1-b (m)	C2-b	D2-b	D3-b	B1-b	B2-b	C3-b
35	D1-a	A1-a (m)	A1-a	C1-a	C1-a (m)	C2-a	D2-a	D3-a	B1-a	B2-a	C3-a
34	D1-b	A1-b (m)	A1-b	C1-b	C1-b (m)	C2-b	D2-b	D3-b	B1-b	B2-b	C3-b
33	D1-c	A1-b (m)	A1-b	C1-c	C1-c (m)	C2-c	D2-c	D3-c	B1-b	B2-b	C3-c
32	D1-b	A1-b (m)	A1-b	C1-b	C1-b (m)	C2-b	D2-b	D3-b	B1-b	B2-b	C3-b
31	D1-a	A1-a (m)	A1-a	C1-a	C1-a (m)	C2-a	D2-a	D3-a	B1-a	B2-a	C3-a
30	D1-b	A1-b (m)	A1-b	C1-b	C1-b (m)	C2-b	D2-b	D3-b	B1-b	B2-b	C3-b
29	D1-c	A1-b (m)	A1-b	C1-c	C1-c (m)	C2-c	D2-c	D3-c	B1-b	B2-b	C3-c
28	D1-b	A1-b (m)	A1-b	C1-b	C1-b (m)	C2-b	D2-b	D3-b	B1-b	B2-b	C3-b
27	D1-a	A1-a (m)	A1-a	C1-a	C1-a (m)	C2-a	D2-a	D3-a	B1-a	B2-a	C3-a
26	D1-b	A1-b (m)	A1-b	C1-b	C1-b (m)	C2-b	D2-b	D3-b	B1-b	B2-b	C3-b
25	D1-c	A1-b (m)	A1-b	C1-c	C1-c (m)	C2-c	D2-c	D3-c	B1-b	B2-b	C3-c
24	D1-b	A1-b (m)	A1-b	C1-b	C1-b (m)	C2-b	D2-b	D3-b	B1-b	B2-b	C3-b
23	D1-a	A1-a (m)	A1-a	C1-a	C1-a (m)	C2-a	D2-a	D3-a	B1-a	B2-a	C3-a
22	D1-b	A1-b (m)	A1-b	C1-b	C1-b (m)	C2-b	D2-b	D3-b	B1-b	B2-b	C3-b
21	D1-c	A1-b (m)	A1-b	C1-c	C1-c (m)	C2-c	D2-c	D3-c	B1-b	B2-b	C3-c
20	D1-b	A1-b (m)	A1-b	C1-b	C1-b (m)	C2-b	D2-b	D3-b	B1-b	B2-b	C3-b
19	D1-a	A1-a (m)	A1-a	C1-a	C1-a (m)	C2-a	D2-a	D3-a	B1-a	B2-a	C3-a
18	交流露台										
17	D1-b	A1-b (m)	A1-b	C1-b	C1-b (m)	C2-b	D2-b	D3-b	B1-b	B2-b	C3-b
16	D1-c	A1-b (m)	A1-b	C1-c	C1-c (m)	C2-c	D2-c	D3-c	B1-b	B2-b	C3-c
15	D1-b	A1-b (m)	A1-b	C1-b	C1-b (m)	C2-b	D2-b	D3-b	B1-b	B2-b	C3-b
14	D1-a	A1-a (m)	A1-a	C1-a	C1-a (m)	C2-a	D2-a	D3-a	B1-a	B2-a	C3-a
13	D1-b	A1-b (m)	A1-b	C1-b	C1-b (m)	C2-b	D2-b	D3-b	B1-b	B2-b	C3-b
12	D1-c	A1-b (m)	A1-b	C1-c	C1-c (m)	C2-c	D2-c	D3-c	B1-b	B2-b	C3-c
11	D1-b	A1-b (m)	A1-b	C1-b	C1-b (m)	C2-b	D2-b	D3-b	B1-b	B2-b	C3-b
10	D1-a	A1-a (m)	A1-a	C1-a	C1-a (m)	C2-a	D2-a	D3-a	B1-a	B2-a	C3-a
9	D1-b	A1-b (m)	A1-b	C1-b	C1-b (m)	C2-b	D2-b	D3-b	B1-b	B2-b	C3-b
8	D1-c	A1-b (m)	A1-b	C1-c	C1-c (m)	C2-c	D2-c	D3-c	B1-b	B2-b	C3-c
7	D1-b	A1-b (m)	A1-b	C1-b	C1-b (m)	C2-b	D2-b	D3-b	B1-b	B2-b	C3-b
6	D1-a	A1-a (m)	A1-a	C1-a	C1-a (m)	C2-a	D2-a	D3-a	B1-a	B2-a	C3-a
5	D1-b	A1-b (m)	A1-b	C1-b	C1-b (m)	C2-b	D2-b	D3-b	B1-b	B2-b	C3-b
4	D1-c	A1-b (m)	A1-b	C1-c	C1-c (m)	C2-c	D2-c	D3-c	B1-b	B2-b	C3-c
3	D1-b	A1-b (m)	A1-b	C1-b	C1-b (m)	C2-b	D2-b	D3-b	B1-b	B2-b	C3-b
2	D1-a	A1-a (m)	A1-a	C1-a	C1-a (m)	C2-a	D2-a	D3-a	B1-a	B2-a	C3-a

12	13	14	15	16	17	18	19	20	21	22	Storey/ Unit No.
天空花园											
F2				F1							38
D1-c	A1-b (m)	A1-b	C1-c	C1-c (m)	B4-b	E1-c	C4-c	B1-b	B3-b	C3-c	37
D1-b	A1-b (m)	A1-b	C1-b	C1-b (m)	B4-b	E1-b	C4-b	B1-b	B3-b	C3-b	36
D1-a	A1-a (m)	A1-a	C1-a	C1-a (m)	B4-a	E1-a	C4-a	B1-a	B3-a	C3-a	35
D1-b	A1-b (m)	A1-b	C1-b	C1-b (m)	B4-b	E1-b	C4-b	B1-b	B3-b	C3-b	34
D1-c	A1-b (m)	A1-b	C1-c	C1-c (m)	B4-b	E1-c	C4-c	B1-b	B3-b	C3-c	33
D1-b	A1-b (m)	A1-b	C1-b	C1-b (m)	B4-b	E1-b	C4-b	B1-b	B3-b	C3-b	32
D1-a	A1-a (m)	A1-a	C1-a	C1-a (m)	B4-a	E1-a	C4-a	B1-a	B3-a	C3-a	31
D1-b	A1-b (m)	A1-b	C1-b	C1-b (m)	B4-b	E1-b	C4-b	B1-b	B3-b	C3-b	30
D1-c	A1-b (m)	A1-b	C1-c	C1-c (m)	B4-b	E1-c	C4-c	B1-b	B3-b	C3-c	29
D1-b	A1-b (m)	A1-b	C1-b	C1-b (m)	B4-b	E1-b	C4-b	B1-b	B3-b	C3-b	28
D1-a	A1-a (m)	A1-a	C1-a	C1-a (m)	B4-a	E1-a	C4-a	B1-a	B3-a	C3-a	27
D1-b	A1-b (m)	A1-b	C1-b	C1-b (m)	B4-b	E1-b	C4-b	B1-b	B3-b	C3-b	26
D1-c	A1-b (m)	A1-b	C1-c	C1-c (m)	B4-b	E1-c	C4-c	B1-b	B3-b	C3-c	25
D1-b	A1-b (m)	A1-b	C1-b	C1-b (m)	B4-b	E1-b	C4-b	B1-b	B3-b	C3-b	24
D1-a	A1-a (m)	A1-a	C1-a	C1-a (m)	B4-a	E1-a	C4-a	B1-a	B3-a	C3-a	23
D1-b	A1-b (m)	A1-b	C1-b	C1-b (m)	B4-b	E1-b	C4-b	B1-b	B3-b	C3-b	22
D1-c	A1-b (m)	A1-b	C1-c	C1-c (m)	B4-b	E1-c	C4-c	B1-b	B3-b	C3-c	21
D1-b	A1-b (m)	A1-b	C1-b	C1-b (m)	B4-b	E1-b	C4-b	B1-b	B3-b	C3-b	20
D1-a	A1-a (m)	A1-a	C1-a	C1-a (m)	B4-a	E1-a	C4-a	B1-a	B3-a	C3-a	19
D1-b	A1-b (m)	A1-b	C1-b	C1-b (m)	B4-b	E1-b	C4-b	B1-b	B3-b	C3-b	18
D1-c	A1-b (m)	A1-b	C1-c	C1-c (m)	B4-b	E1-c	C4-c	B1-b	B3-b	C3-c	17
D1-b	A1-b (m)	A1-b	C1-b	C1-b (m)	B4-b	E1-b	C4-b	B1-b	B3-b	C3-b	16
D1-a	A1-a (m)	A1-a	C1-a	C1-a (m)	B4-a	E1-a	C4-a	B1-a	B3-a	C3-a	15
悠闲露台											14
D1-b	A1-b (m)	A1-b	C1-b	C1-b (m)	B4-b	E1-b	C4-b	B1-b	B3-b	C3-b	13
D1-c	A1-b (m)	A1-b	C1-c	C1-c (m)	B4-b	E1-c	C4-c	B1-b	B3-b	C3-c	12
D1-b	A1-b (m)	A1-b	C1-b	C1-b (m)	B4-b	E1-b	C4-b	B1-b	B3-b	C3-b	11
D1-a	A1-a (m)	A1-a	C1-a	C1-a (m)	B4-a	E1-a	C4-a	B1-a	B3-a	C3-a	10
D1-b	A1-b (m)	A1-b	C1-b	C1-b (m)	B4-b	E1-b	C4-b	B1-b	B3-b	C3-b	9
D1-c	A1-b (m)	A1-b	C1-c	C1-c (m)	B4-b	E1-c	C4-c	B1-b	B3-b	C3-c	8
D1-b	A1-b (m)	A1-b	C1-b	C1-b (m)	B4-b	E1-b	C4-b	B1-b	B3-b	C3-b	7
D1-a	A1-a (m)	A1-a	C1-a	C1-a (m)	B4-a	E1-a	C4-a	B1-a	B3-a	C3-a	6
D1-b	A1-b (m)	A1-b	C1-b	C1-b (m)	B4-b	E1-b	C4-b	B1-b	B3-b	C3-b	5
D1-c	A1-b (m)	A1-b	C1-c	C1-c (m)	B4-b	E1-c	C4-c	B1-b	B3-b	C3-c	4
D1-b	A1-b (m)	A1-b	C1-b	C1-b (m)	B4-b	E1-b	C4-b	B1-b	B3-b	C3-b	3
D1-a	A1-a (m)	A1-a	C1-a	C1-a (m)	B4-a	E1-a	C4-a	B1-a	B3-a	C3-a	2

TYPE A1-a
40 sq m / 431 sq ft

#02-03; #06-03; #10-03; #14-03; #19-03;
#23-03; #27-03; #31-03; #35-03;

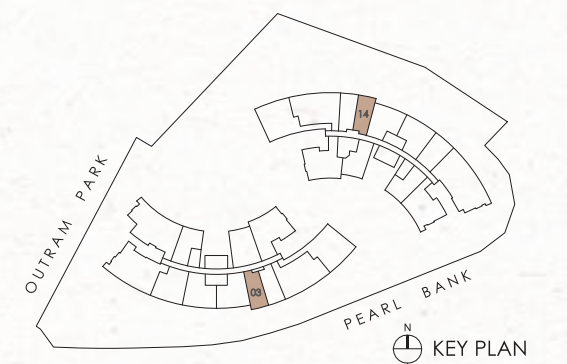
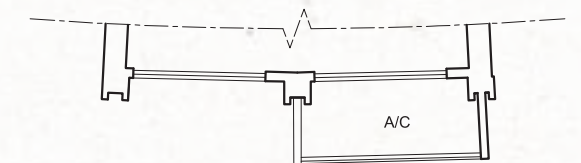
#02-14; #06-14; #10-14; #15-14; #19-14;
#23-14; #27-14; #31-14; #35-14



TYPE A1-b
40 sq m / 431 sq ft

#03-03; #04-03; #05-03; #07-03; #08-03;
#09-03; #11-03; #12-03; #13-03; #15-03;
#16-03; #17-03; #20-03; #21-03; #22-03;
#24-03; #25-03; #26-03; #28-03; #29-03;
#30-03; #32-03; #33-03; #34-03; #36-03;
#37-03;

#03-14; #04-14; #05-14; #07-14; #08-14;
#09-14; #11-14; #12-14; #13-14; #16-14;
#17-14; #18-14; #20-14; #21-14; #22-14;
#24-14; #25-14; #26-14; #28-14; #29-14;
#30-14; #32-14; #33-14; #34-14; #36-14;
#37-14;



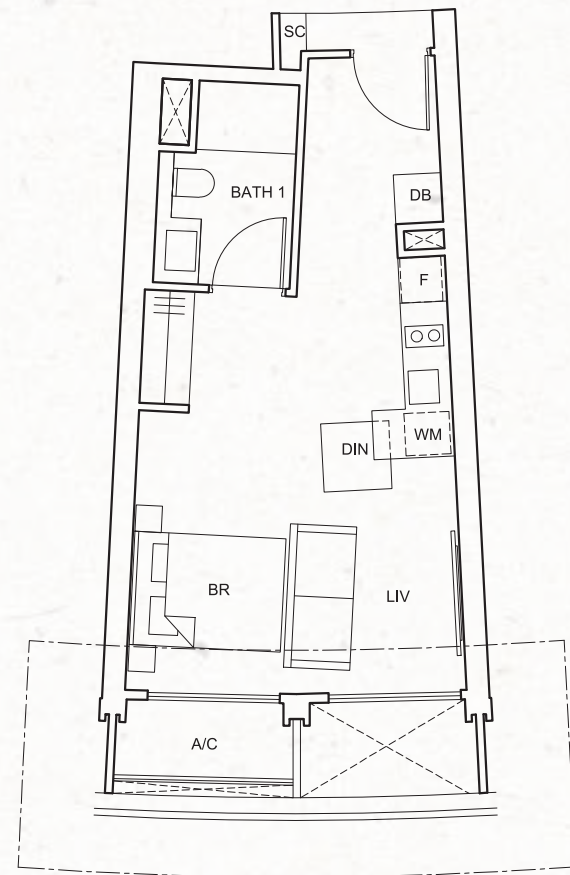
All floor areas indicated are inclusive of AC ledge, planters and balcony where applicable. The plans are subject to change as may be approved by the relevant authorities. All floor plans are approximate measurements only and subject to government re-survey. The balcony shall not be enclosed unless with the approved balcony screen. The installation and cost of the balcony screen shall be borne by the purchaser. For an illustration of the approved balcony screen, please refer to the diagram annexed hereto as "Annexure".

STUDIO

TYPE A1-a(m)
40 sq m / 431 sq ft

#02-02; #06-02; #10-02; #14-02; #19-02;
#23-02; #27-02; #31-02; #35-02;

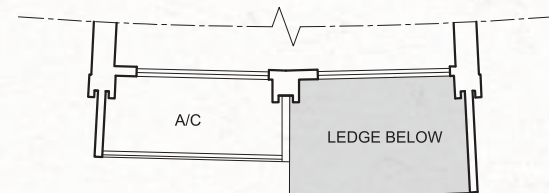
#02-13; #06-13; #10-13; #15-13; #19-13;
#23-13; #27-13; #31-13; #35-13



TYPE A1-b(m)
40 sq m / 431 sq ft

#03-02; #04-02; #05-02; #07-02; #08-02;
#09-02; #11-02; #12-02; #13-02; #15-02;
#16-02; #17-02; #20-02; #21-02; #22-02;
#24-02; #25-02; #26-02; #28-02; #29-02;
#30-02; #32-02; #33-02; #34-02; #36-02;
#37-02;

#03-13; #04-13; #05-13; #07-13; #08-13;
#09-13; #11-13; #12-13; #13-13; #16-13;
#17-13; #18-13; #20-13; #21-13; #22-13;
#24-13; #25-13; #26-13; #28-13; #29-13;
#30-13; #32-13; #33-13; #34-13; #36-13;
#37-13;



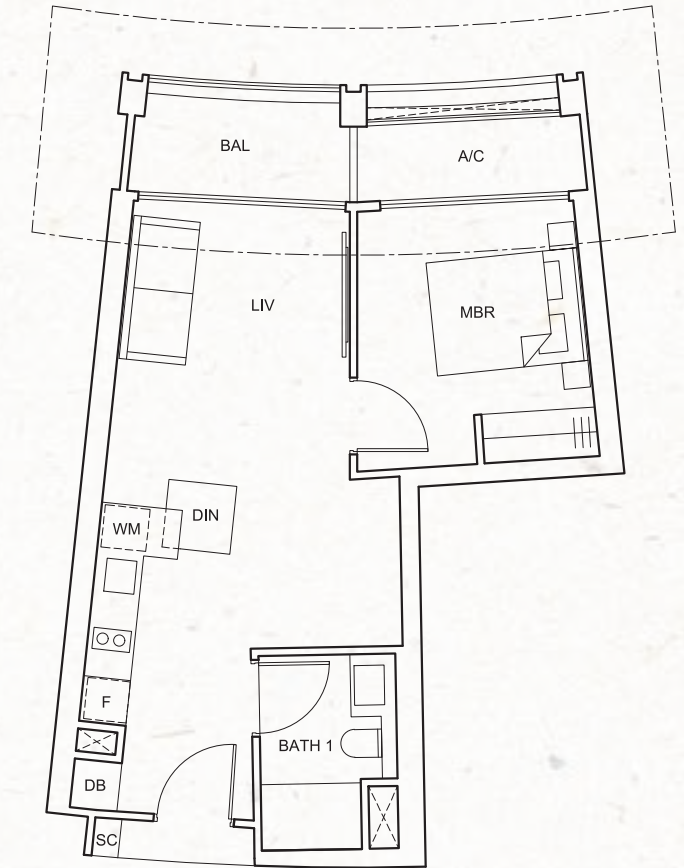
All floor areas indicated are inclusive of AC ledge, planters and balcony where applicable. The plans are subject to change as may be approved by the relevant authorities. All floor plans are approximate measurements only and subject to government re-survey. The balcony shall not be enclosed unless with the approved balcony screen. The installation and cost of the balcony screen shall be borne by the purchaser. For an illustration of the approved balcony screen, please refer to the diagram annexed hereto as "Annexure".

1-BEDROOM

TYPE B1-a
53 sq m / 570 sq ft

#02-09; #06-09; #10-09; #14-09; #19-09;
#23-09; #27-09; #31-09; #35-09;

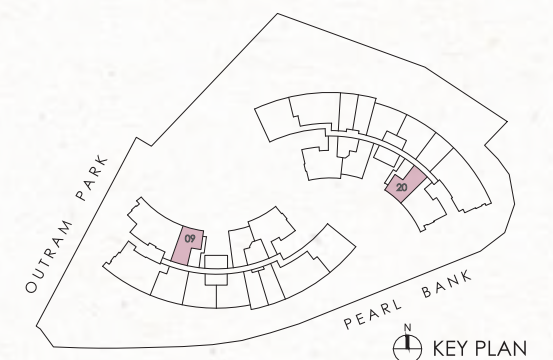
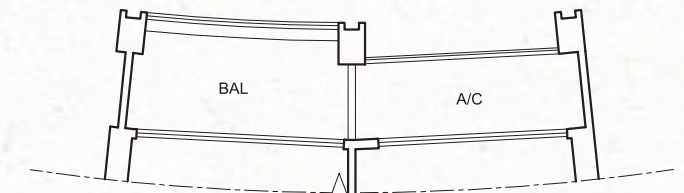
#02-20; #06-20; #10-20; #15-20; #19-20;
#23-20; #27-20; #31-20; #35-20



TYPE B1-b
53 sq m / 570 sq ft

#03-09; #04-09; #05-09; #07-09; #08-09;
#09-09; #11-09; #12-09; #13-09; #15-09;
#16-09; #17-09; #20-09; #21-09; #22-09;
#24-09; #25-09; #26-09; #28-09; #29-09;
#30-09; #32-09; #33-09; #34-09; #36-09;
#37-09;

#03-20; #04-20; #05-20; #07-20; #08-20;
#09-20; #11-20; #12-20; #13-20; #16-20;
#17-20; #18-20; #20-20; #21-20; #22-20;
#24-20; #25-20; #26-20; #28-20; #29-20;
#30-20; #32-20; #33-20; #34-20; #36-20;
#37-20;

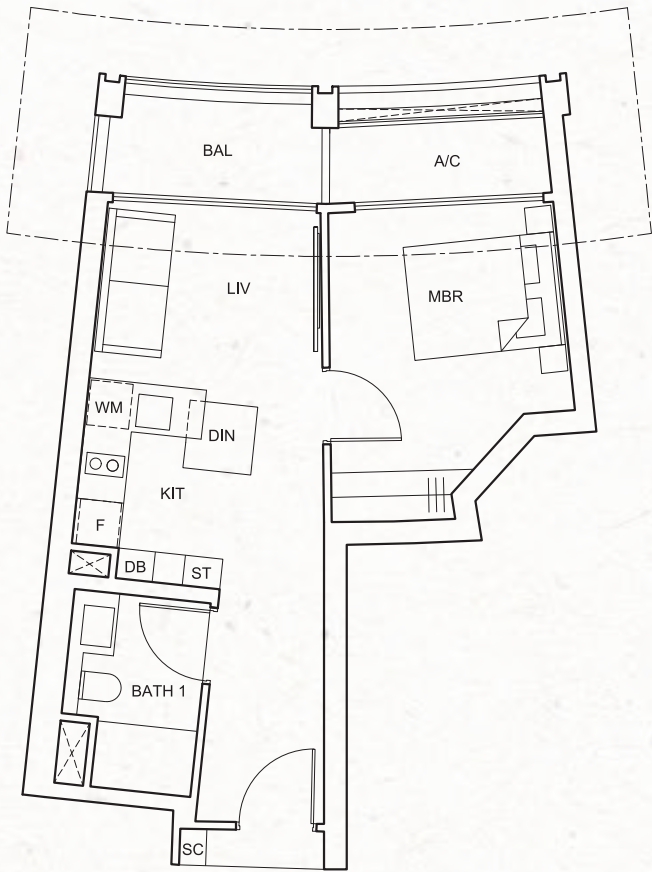


All floor areas indicated are inclusive of AC ledge, planters and balcony where applicable. The plans are subject to change as may be approved by the relevant authorities. All floor plans are approximate measurements only and subject to government re-survey. The balcony shall not be enclosed unless with the approved balcony screen. The installation and cost of the balcony screen shall be borne by the purchaser. For an illustration of the approved balcony screen, please refer to the diagram annexed hereto as "Annexure".

1-BEDROOM

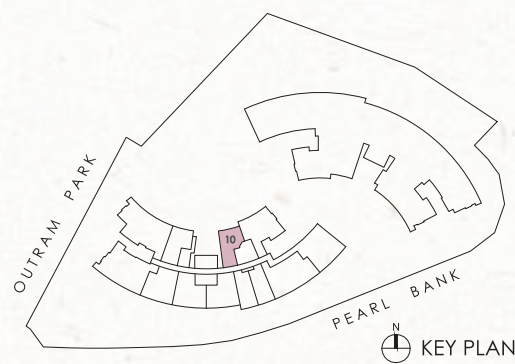
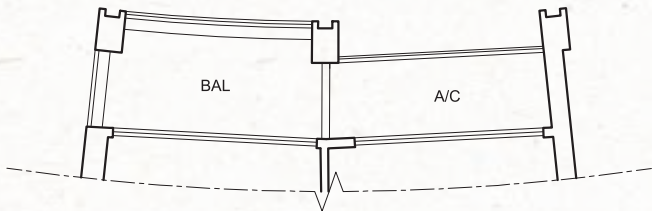
TYPE B2-a
49 sq m / 527 sq ft

#02-10; #06-10; #10-10; #14-10; #19-10;
#23-10; #27-10; #31-10; #35-10;



TYPE B2-b
49 sq m / 527 sq ft

#03-10; #04-10; #05-10; #07-10; #08-10;
#09-10; #11-10; #12-10; #13-10; #15-10;
#16-10; #17-10; #20-10; #21-10; #22-10;
#24-10; #25-10; #26-10; #28-10; #29-10;
#30-10; #32-10; #33-10; #34-10; #36-10;
#37-10

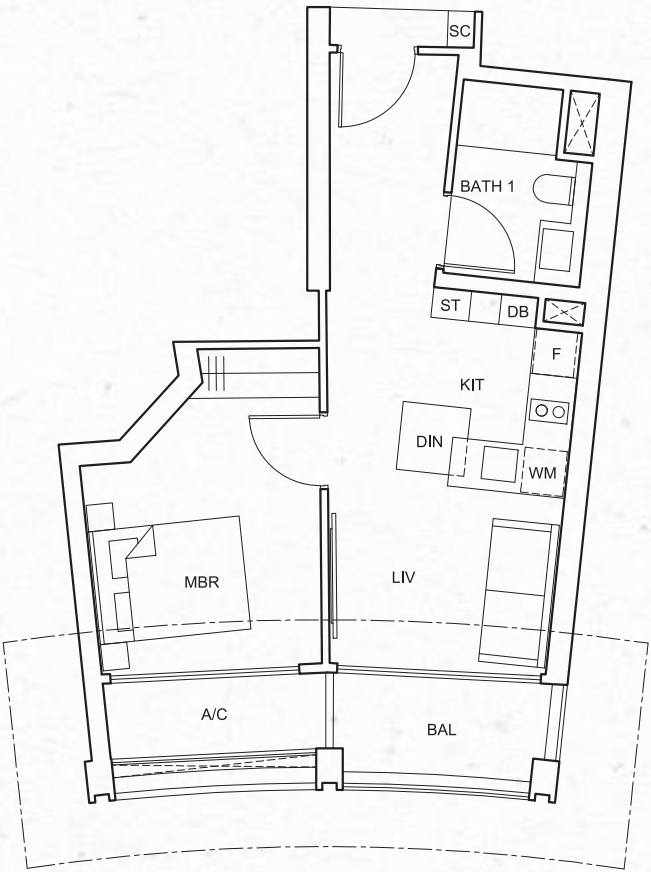


All floor areas indicated are inclusive of AC ledge, planters and balcony where applicable. The plans are subject to change as may be approved by the relevant authorities. All floor plans are approximate measurements only and subject to government re-survey. The balcony shall not be enclosed unless with the approved balcony screen. The installation and cost of the balcony screen shall be borne by the purchaser. For an illustration of the approved balcony screen, please refer to the diagram annexed hereto as "Annexure".

1-BEDROOM

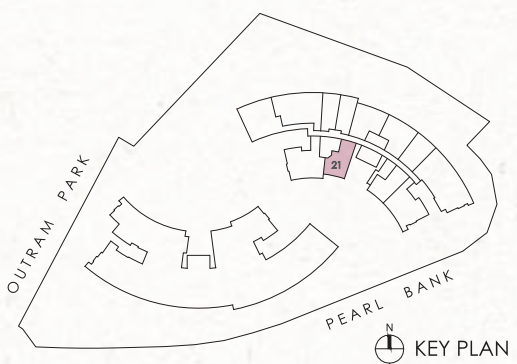
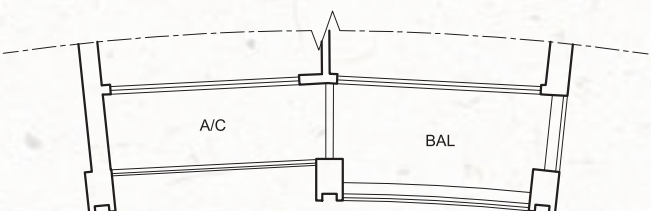
TYPE B3-a
49 sq m / 527 sq ft

#02-21; #06-21; #10-21; #15-21; #19-21;
#23-21; #27-21; #31-21; #35-21;



TYPE B3-b
49 sq m / 527 sq ft

#03-21; #04-21; #05-21; #07-21; #08-21;
#09-21; #11-21; #12-21; #13-21; #16-21;
#17-21; #18-21; #20-21; #21-21; #22-21;
#24-21; #25-21; #26-21; #28-21; #29-21;
#30-21; #32-21; #33-21; #34-21; #36-21;
#37-21

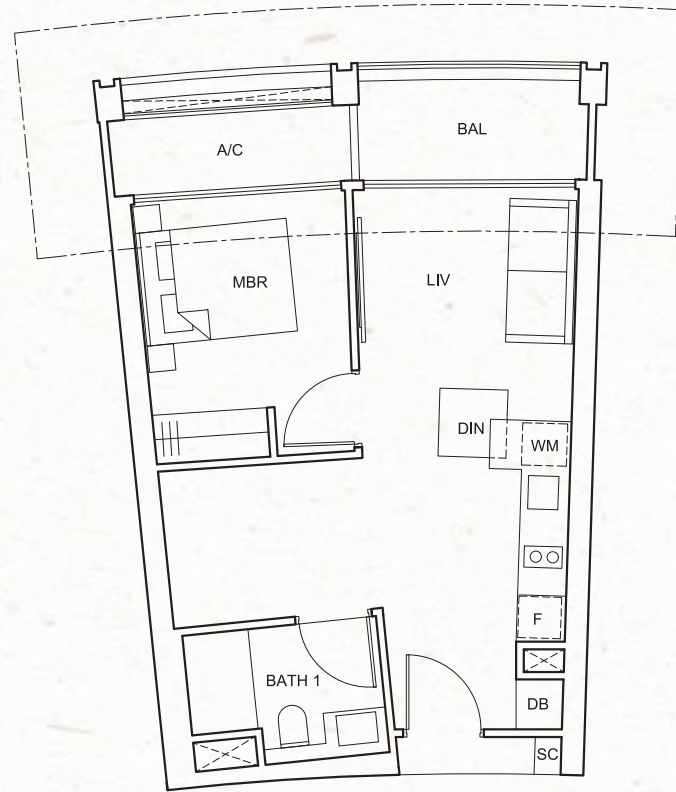


All floor areas indicated are inclusive of AC ledge, planters and balcony where applicable. The plans are subject to change as may be approved by the relevant authorities. All floor plans are approximate measurements only and subject to government re-survey. The balcony shall not be enclosed unless with the approved balcony screen. The installation and cost of the balcony screen shall be borne by the purchaser. For an illustration of the approved balcony screen, please refer to the diagram annexed hereto as "Annexure".

1-BEDROOM

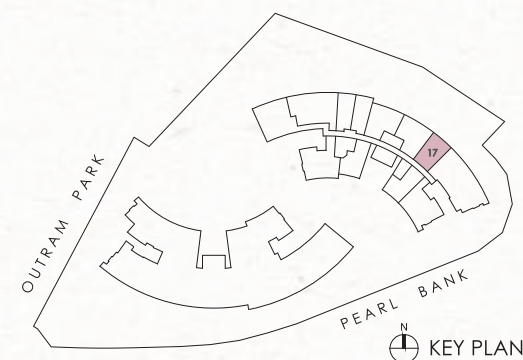
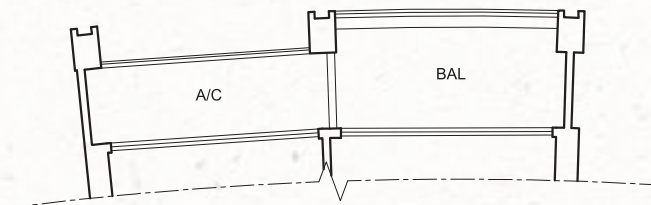
TYPE B4-a
52 sq m / 560 sq ft

#02-17; #06-17; #10-17; #15-17; #19-17;
#23-17; #27-17; #31-17; #35-17



TYPE B4-b
52 sq m / 560 sq ft

#03-17; #04-17; #05-17; #07-17; #08-17;
#09-17; #11-17; #12-17; #13-17; #16-17;
#17-17; #18-17; #20-17; #21-17; #22-17;
#24-17; #25-17; #26-17; #28-17; #29-17;
#30-17; #32-17; #33-17; #34-17; #36-17;
#37-17;



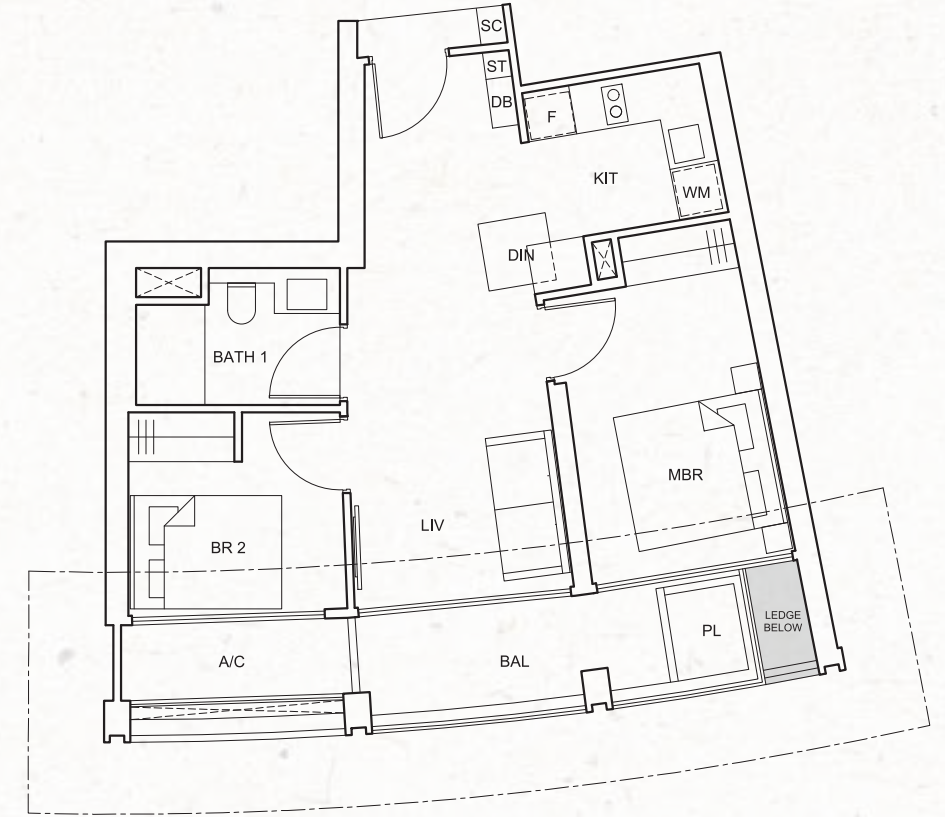
All floor areas indicated are inclusive of AC ledge, planters and balcony where applicable. The plans are subject to change as may be approved by the relevant authorities. All floor plans are approximate measurements only and subject to government re-survey. The balcony shall not be enclosed unless with the approved balcony screen. The installation and cost of the balcony screen shall be borne by the purchaser. For an illustration of the approved balcony screen, please refer to the diagram annexed hereto as "Annexure".

2-BEDROOM

TYPE C1-a
65 sq m / 700 sq ft

#02-04; #06-04; #10-04; #14-04; #19-04;
#23-04; #27-04; #31-04; #35-04;

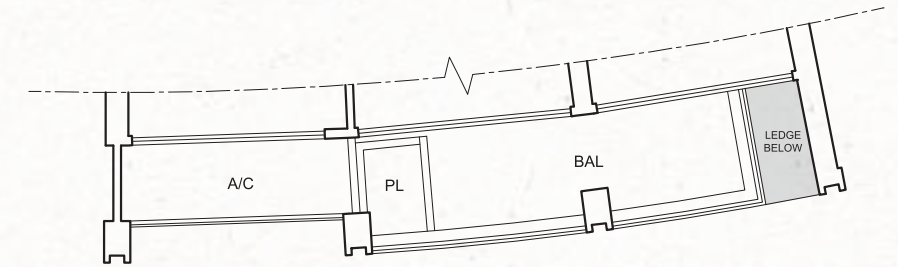
#02-15; #06-15; #10-15; #15-15; #19-15;
#23-15; #27-15; #31-15; #35-15;



TYPE C1-b
65 sq m / 700 sq ft

#03-04; #05-04; #07-04; #09-04; #11-04;
#13-04; #15-04; #17-04; #20-04; #22-04;
#24-04; #26-04; #28-04; #30-04; #32-04;
#34-04; #36-04;

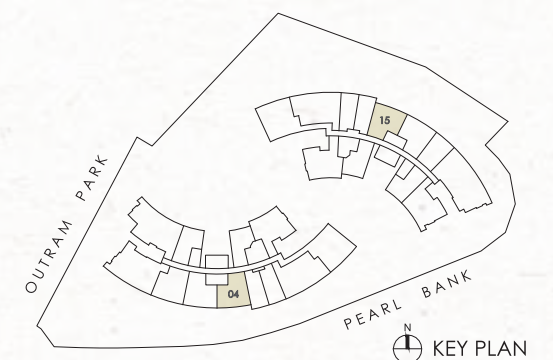
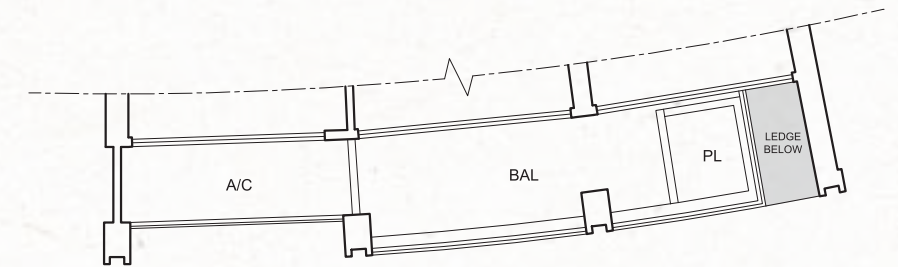
#03-15; #05-15; #07-15; #09-15; #11-15;
#13-15; #16-15; #18-15; #20-15; #22-15;
#24-15; #26-15; #28-15; #30-15; #32-15;
#34-15; #36-15;



TYPE C1-c
65 sq m / 700 sq ft

#04-04; #08-04; #12-04; #16-04; #21-04;
#25-04; #29-04; #33-04; #37-04;

#04-15; #08-15; #12-15; #17-15; #21-15;
#25-15; #29-15; #33-15; #37-15;



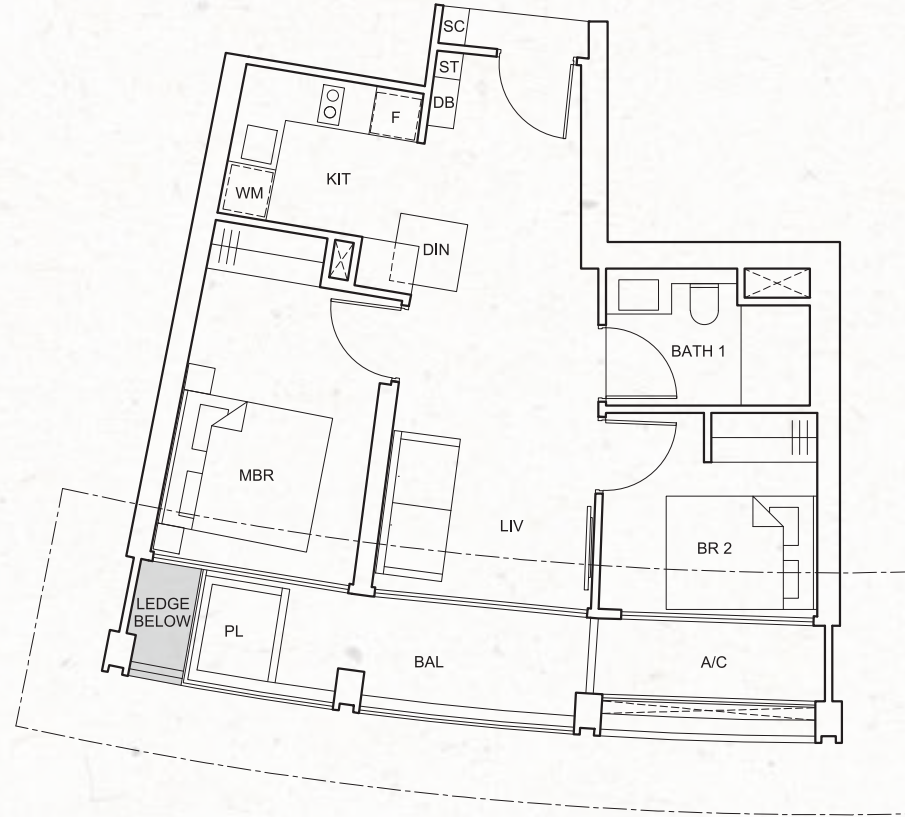
All floor areas indicated are inclusive of AC ledge, planters and balcony where applicable. The plans are subject to change as may be approved by the relevant authorities. All floor plans are approximate measurements only and subject to government re-survey. The balcony shall not be enclosed unless with the approved balcony screen. The installation and cost of the balcony screen shall be borne by the purchaser. For an illustration of the approved balcony screen, please refer to the diagram annexed hereto as "Annexure".

2-BEDROOM

TYPE C1-a (m)
65 sq m / 700 sq ft

#02-05; #06-05; #10-05; #14-05; #19-05;
#23-05; #27-05; #31-05; #35-05;

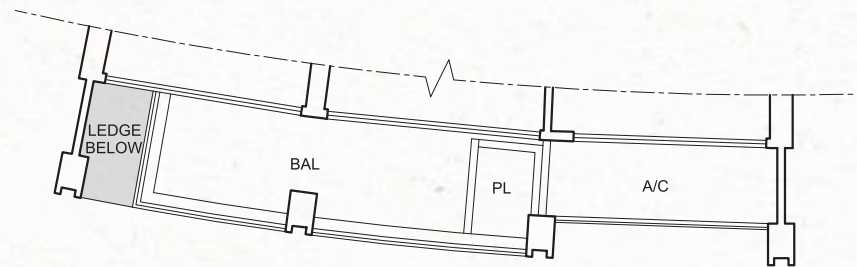
#02-16; #06-16; #10-16; #15-16; #19-16;
#23-16; #27-16; #31-16; #35-16;



TYPE C1-b (m)
65 sq m / 700 sq ft

#03-05; #05-05; #07-05; #09-05; #11-05;
#13-05; #15-05; #17-05; #20-05; #22-05;
#24-05; #26-05; #28-05; #30-05; #32-05;
#34-05; #36-05;

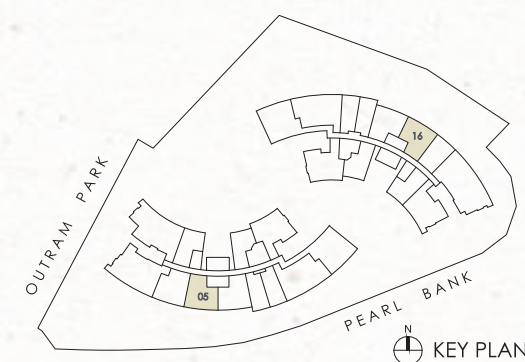
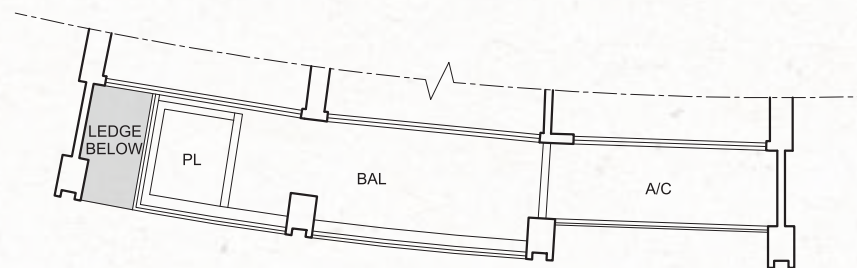
#03-16; #05-16; #07-16; #09-16; #11-16;
#13-16; #16-16; #18-16; #20-16; #22-16;
#24-16; #26-16; #28-16; #30-16; #32-16;
#34-16; #36-16;



TYPE C1-c (m)
65 sq m / 700 sq ft

#04-05; #08-05; #12-05; #16-05; #21-05;
#25-05; #29-05; #33-05; #37-05;

#04-16; #08-16; #12-16; #17-16; #21-16;
#25-16; #29-16; #33-16; #37-16;



All floor areas indicated are inclusive of AC ledge, planters and balcony where applicable. The plans are subject to change as may be approved by the relevant authorities. All floor plans are approximate measurements only and subject to government re-survey. The balcony shall not be enclosed unless with the approved balcony screen. The installation and cost of the balcony screen shall be borne by the purchaser. For an illustration of the approved balcony screen, please refer to the diagram annexed hereto as "Annexure".

2-BEDROOM

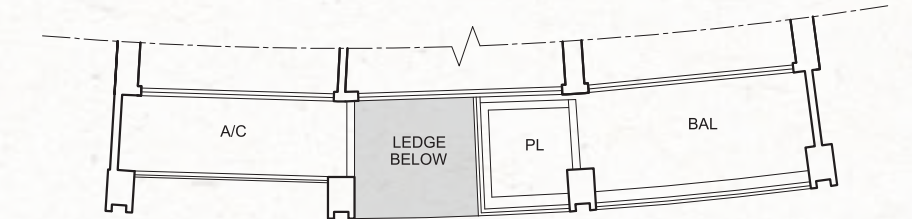
TYPE C2-a
69 sq m / 743 sq ft

#02-06; #06-06; #10-06; #14-06; #19-06;
#23-06; #27-06; #31-06; #35-06



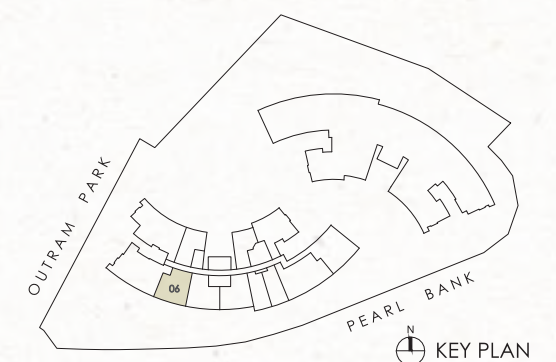
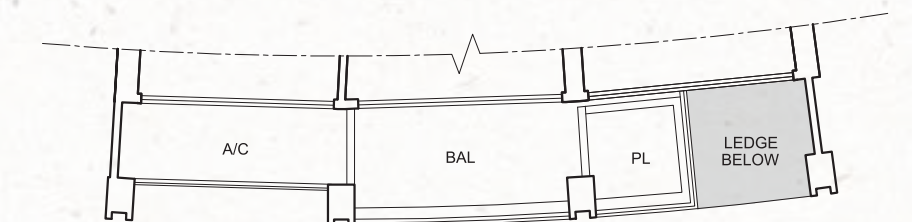
TYPE C2-b
69 sq m / 743 sq ft

#03-06; #05-06; #07-06; #09-06; #11-06;
#13-06; #15-06; #17-06; #20-06; #22-06;
#24-06; #26-06; #28-06; #30-06; #32-06;
#34-06; #36-06



TYPE C2-c
69 sq m / 743 sq ft

#04-06; #08-06; #12-06; #16-06; #21-06;
#25-06; #29-06; #33-06; #37-06



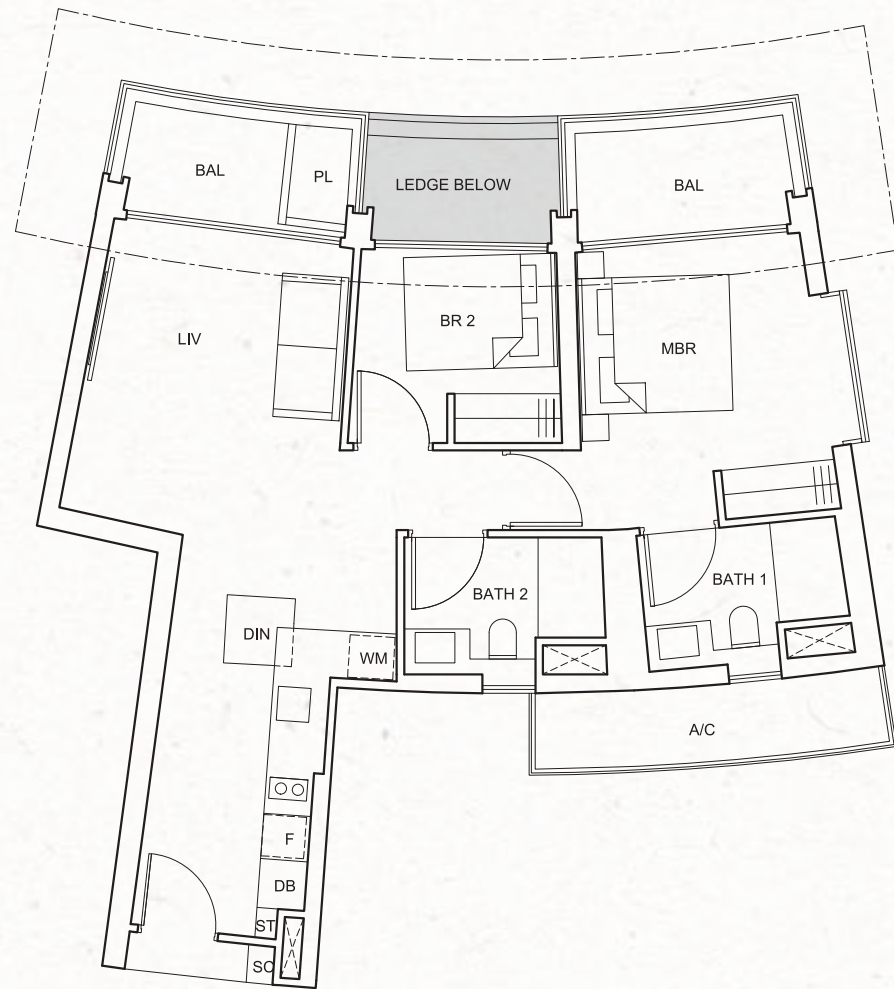
All floor areas indicated are inclusive of AC ledge, planters and balcony where applicable. The plans are subject to change as may be approved by the relevant authorities. All floor plans are approximate measurements only and subject to government re-survey. The balcony shall not be enclosed unless with the approved balcony screen. The installation and cost of the balcony screen shall be borne by the purchaser. For an illustration of the approved balcony screen, please refer to the diagram annexed hereto as "Annexure".

2-BEDROOM

TYPE C3-a
83 sq m / 893 sq ft

#02-11; #06-11; #10-11; #14-11; #19-11;
#23-11; #27-11; #31-11; #35-11;

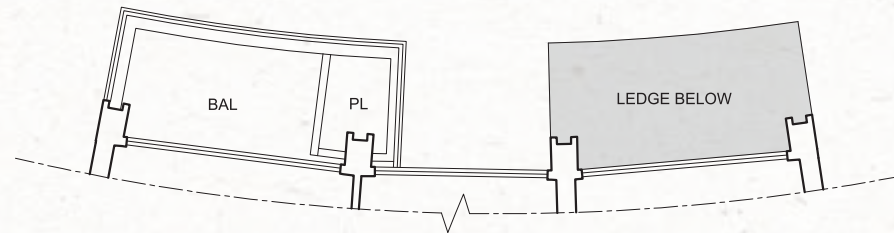
#02-22; #06-22; #10-22; #15-22; #19-22;
#23-22; #27-22; #31-22; #35-22



TYPE C3-b
78 sq m / 840 sq ft

#03-11; #05-11; #07-11; #09-11; #11-11;
#13-11; #15-11; #17-11; #20-11; #22-11;
#24-11; #26-11; #28-11; #30-11; #32-11;
#34-11; #36-11;

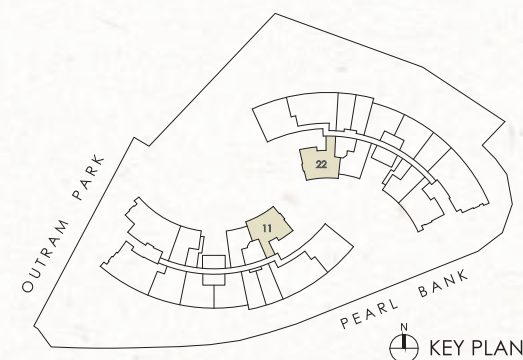
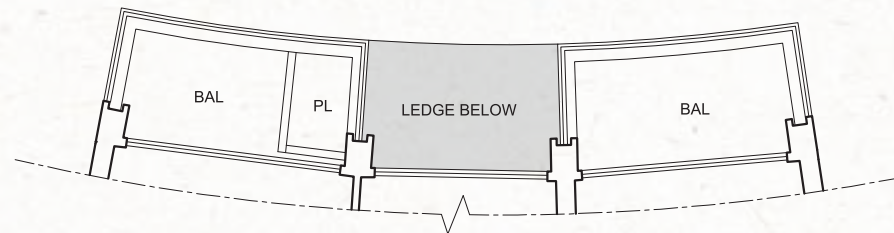
#03-22; #05-22; #07-22; #09-22; #11-22;
#13-22; #16-22; #18-22; #20-22; #22-22;
#24-22; #26-22; #28-22; #30-22; #32-22;
#34-22; #36-22



TYPE C3-c
83 sq m / 893 sq ft

#04-11; #08-11; #12-11; #16-11; #21-11;
#25-11; #29-11; #33-11; #37-11;

#04-22; #08-22; #12-22; #17-22; #21-22;
#25-22; #29-22; #33-22; #37-22

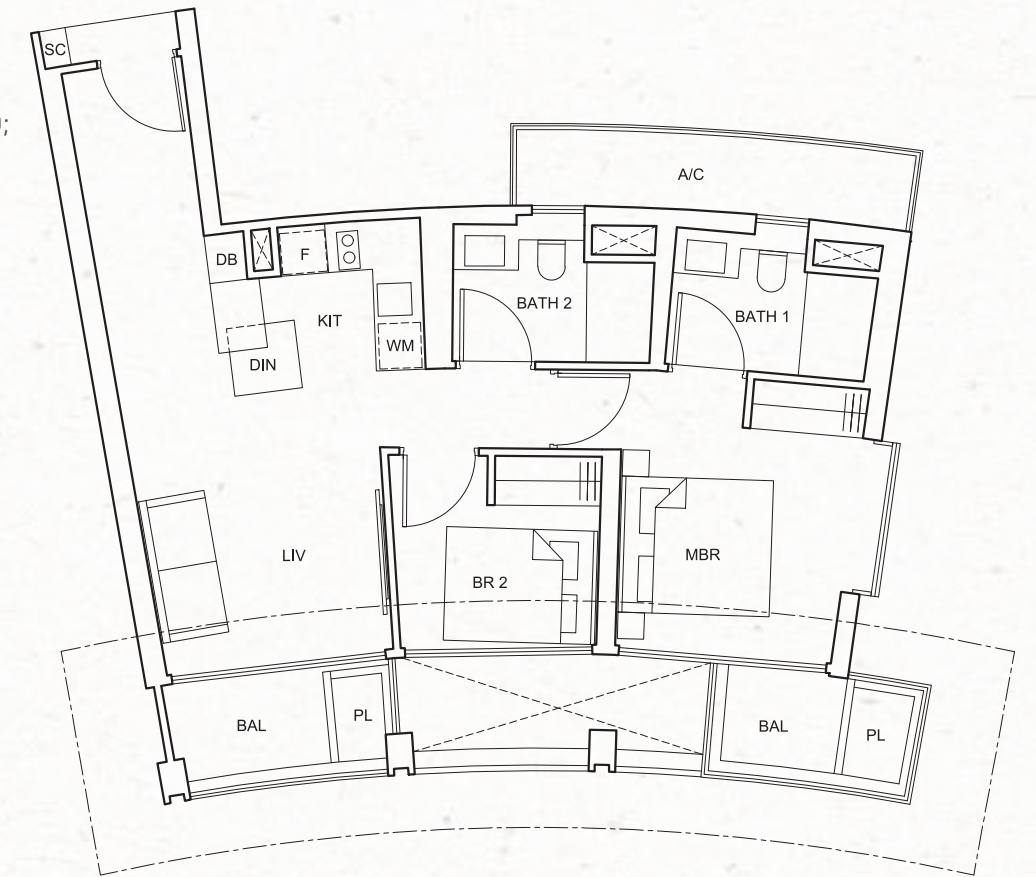


All floor areas indicated are inclusive of AC ledge, planters and balcony where applicable. The plans are subject to change as may be approved by the relevant authorities. All floor plans are approximate measurements only and subject to government re-survey. The balcony shall not be enclosed unless with the approved balcony screen. The installation and cost of the balcony screen shall be borne by the purchaser. For an illustration of the approved balcony screen, please refer to the diagram annexed hereto as "Annexure".

2-BEDROOM

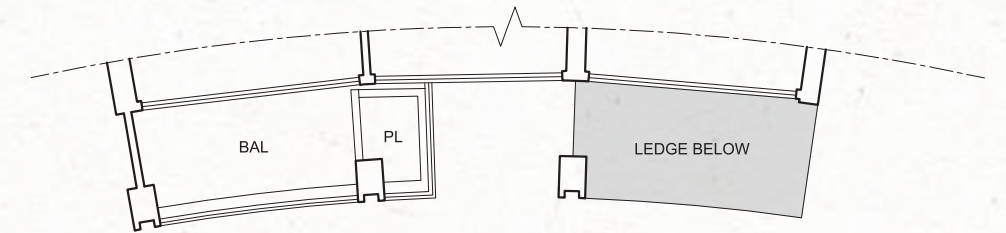
TYPE C4-a
78 sq m / 840 sq ft

#02-19; #06-19; #10-19; #15-19; #19-19;
#23-19; #27-19; #31-19; #35-19



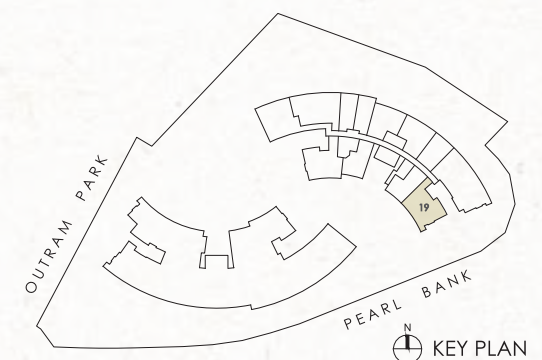
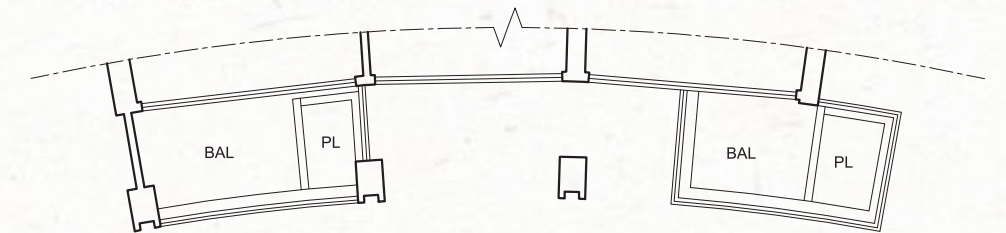
TYPE C4-b
75 sq m / 807 sq ft

#03-19; #05-19; #07-19; #09-19; #11-19;
#13-19; #16-19; #18-19; #20-19; #22-19;
#24-19; #26-19; #28-19; #30-19; #32-19;
#34-19; #36-19



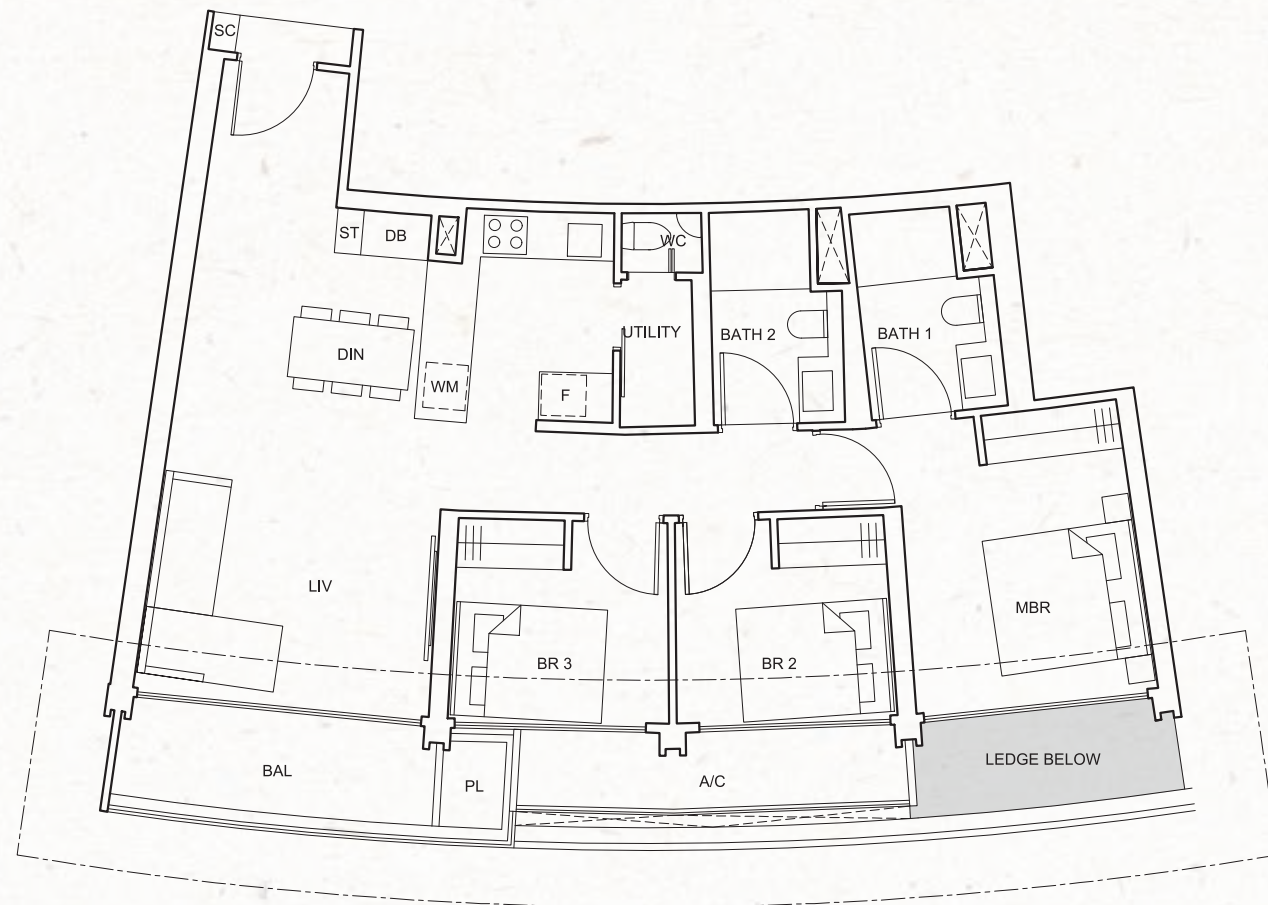
TYPE C4-c
78 sq m / 840 sq ft

#04-19; #08-19; #12-19; #17-19; #21-19;
#25-19; #29-19; #33-19; #37-19



All floor areas indicated are inclusive of AC ledge, planters and balcony where applicable. The plans are subject to change as may be approved by the relevant authorities. All floor plans are approximate measurements only and subject to government re-survey. The balcony shall not be enclosed unless with the approved balcony screen. The installation and cost of the balcony screen shall be borne by the purchaser. For an illustration of the approved balcony screen, please refer to the diagram annexed hereto as "Annexure".

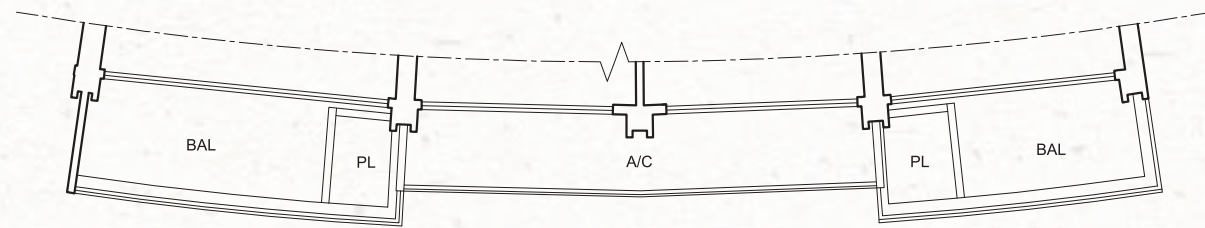
3-BEDROOM



TYPE D1-a
102 sq m / 1,098 sq ft

#02-01; #06-01; #10-01; #14-01; #19-01;
#23-01; #27-01; #31-01; #35-01;

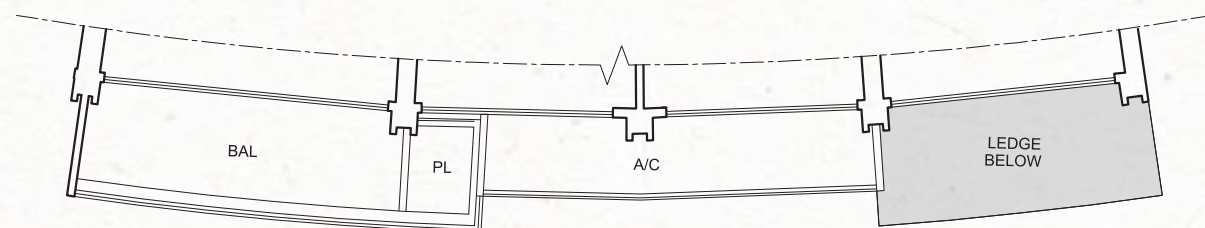
#02-12; #06-12; #10-12; #15-12; #19-12;
#23-12; #27-12; #31-12; #35-12



TYPE D1-b
107 sq m / 1,152 sq ft

#03-01; #05-01; #07-01; #09-01; #11-01;
#13-01; #15-01; #17-01; #20-01; #22-01;
#24-01; #26-01; #28-01; #30-01; #32-01;
#34-01; #36-01;

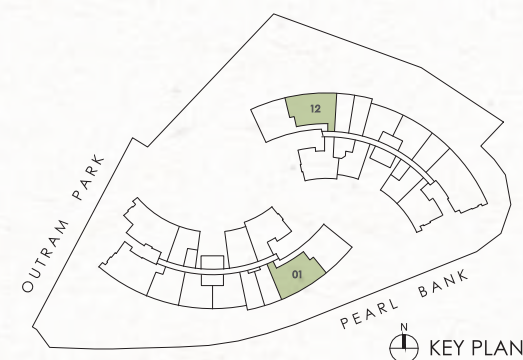
#03-12; #05-12; #07-12; #09-12; #11-12;
#13-12; #16-12; #18-12; #20-12; #22-12;
#24-12; #26-12; #28-12; #30-12; #32-12;
#34-12; #36-12



TYPE D1-c
102 sq m / 1,098 sq ft

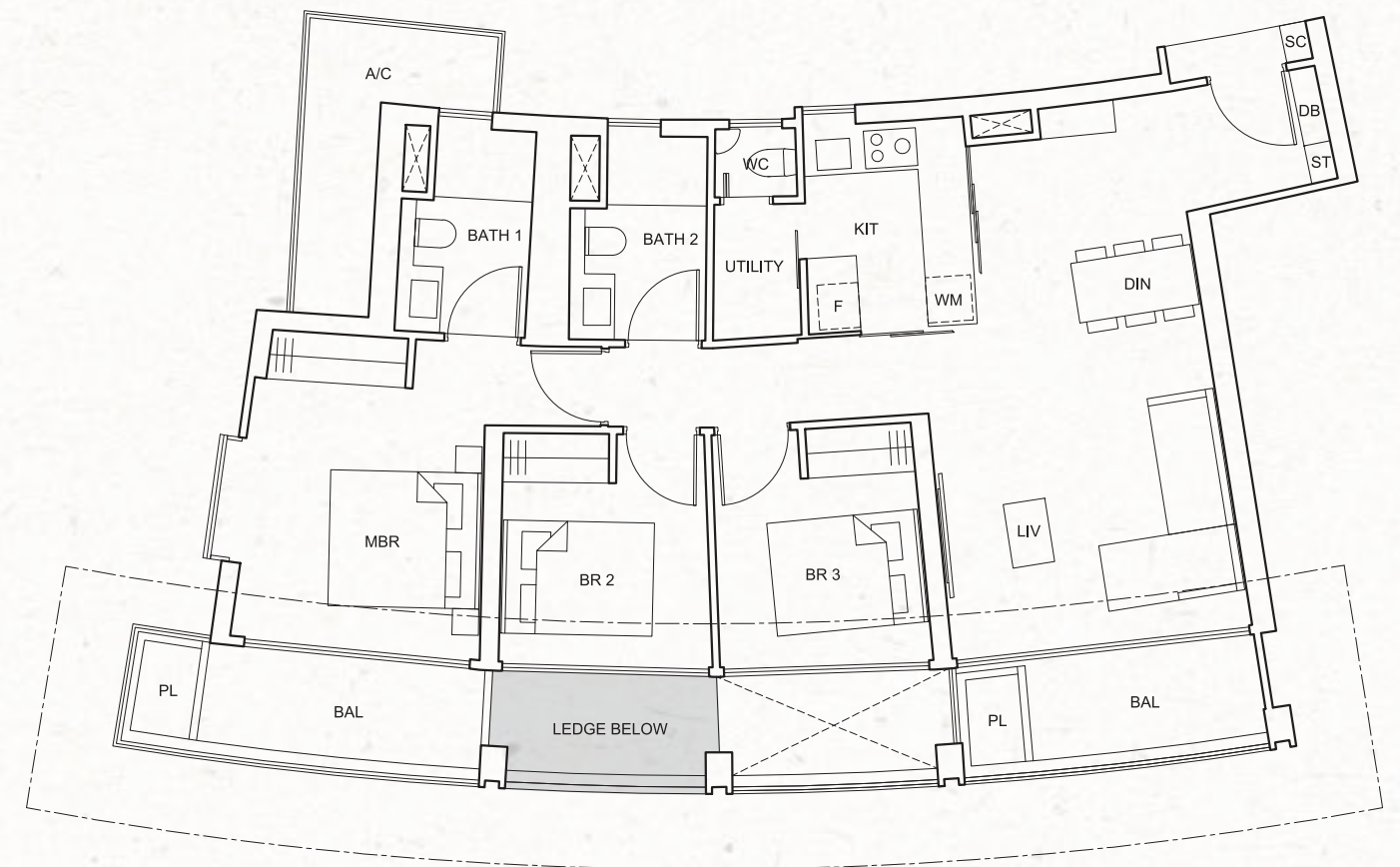
#04-01; #08-01; #12-01; #16-01; #21-01;
#25-01; #29-01; #33-01; #37-01;

#04-12; #08-12; #12-12; #17-12; #21-12;
#25-12; #29-12; #33-12; #37-12



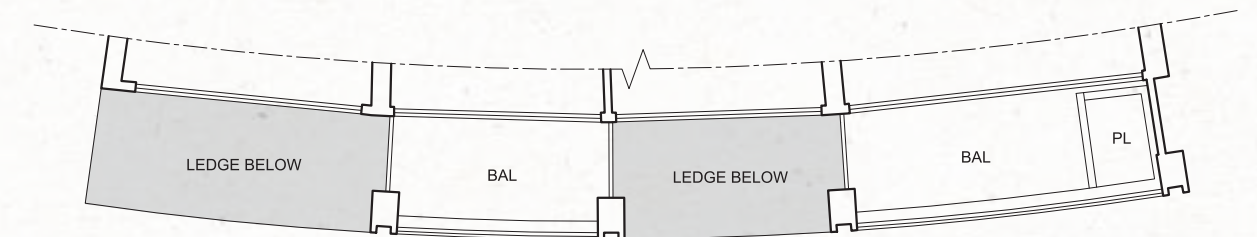
All floor areas indicated are inclusive of AC ledge, planters and balcony where applicable. The plans are subject to change as may be approved by the relevant authorities. All floor plans are approximate measurements only and subject to government re-survey. The balcony shall not be enclosed unless with the approved balcony screen. The installation and cost of the balcony screen shall be borne by the purchaser. For an illustration of the approved balcony screen, please refer to the diagram annexed hereto as "Annexure".

3-BEDROOM



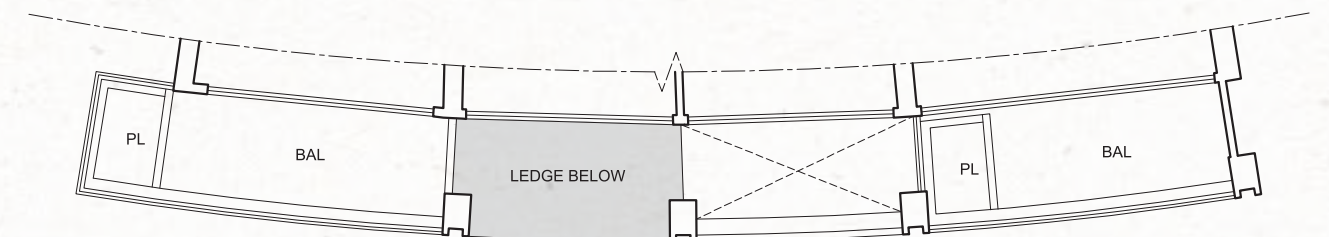
TYPE D2-a
113 sq m / 1,216 sq ft

#02-07; #06-07; #10-07; #14-07; #19-07;
#23-07; #27-07; #31-07; #35-07



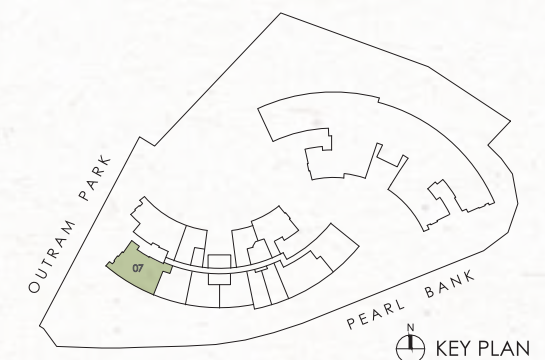
TYPE D2-b
110 sq m / 1,184 sq ft

#03-07; #05-07; #07-07; #09-07; #11-07;
#13-07; #15-07; #17-07; #20-07; #22-07;
#24-07; #26-07; #28-07; #30-07; #32-07;
#34-07; #36-07



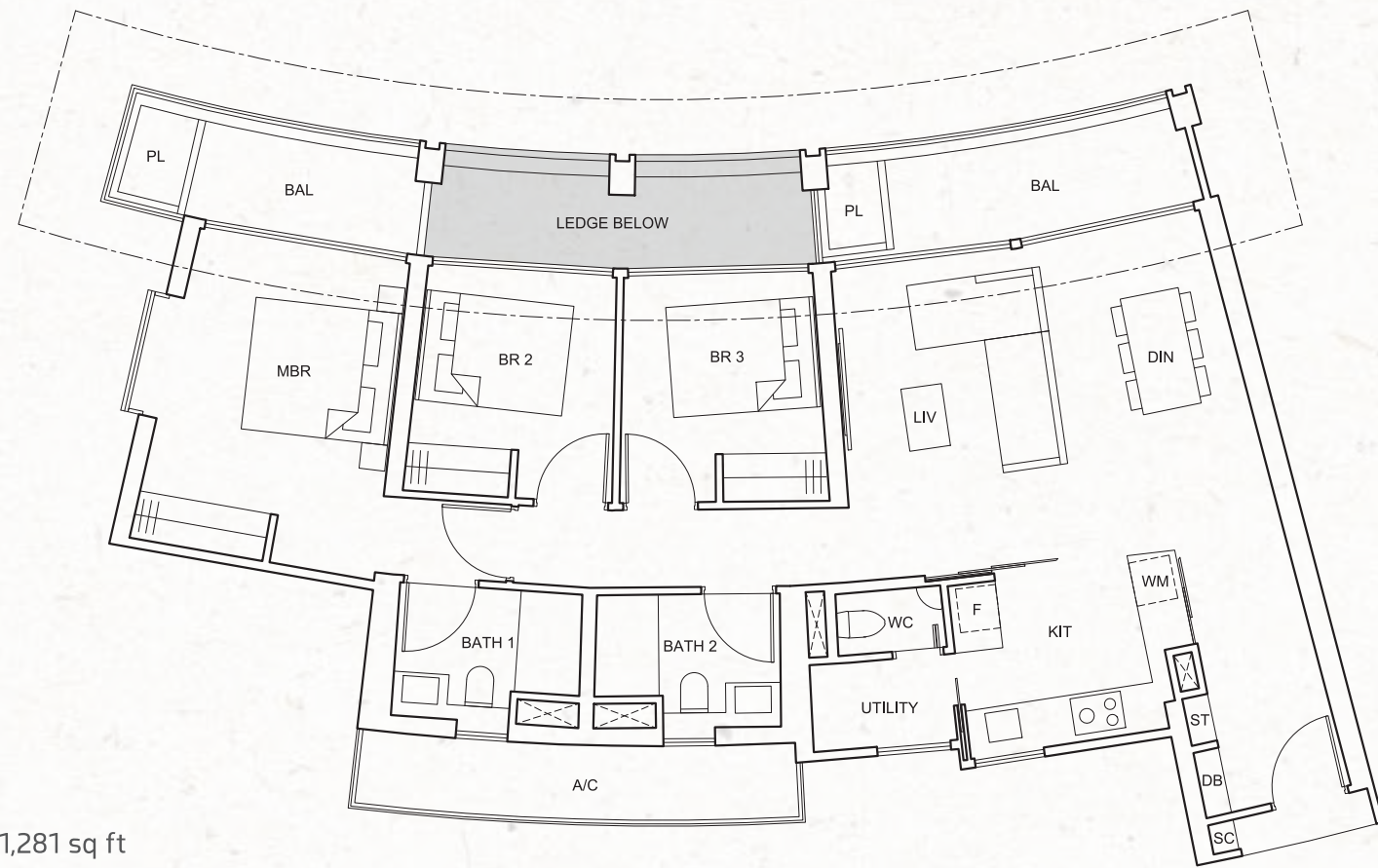
TYPE D2-c
113 sq m / 1,216 sq ft

#04-07; #08-07; #12-07; #16-07; #21-07;
#25-07; #29-07; #33-07; #37-07



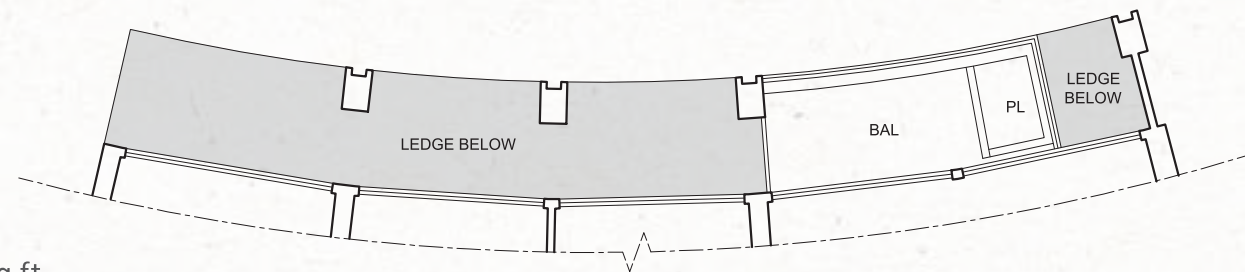
All floor areas indicated are inclusive of AC ledge, planters and balcony where applicable. The plans are subject to change as may be approved by the relevant authorities. All floor plans are approximate measurements only and subject to government re-survey. The balcony shall not be enclosed unless with the approved balcony screen. The installation and cost of the balcony screen shall be borne by the purchaser. For an illustration of the approved balcony screen, please refer to the diagram annexed hereto as "Annexure".

3-BEDROOM



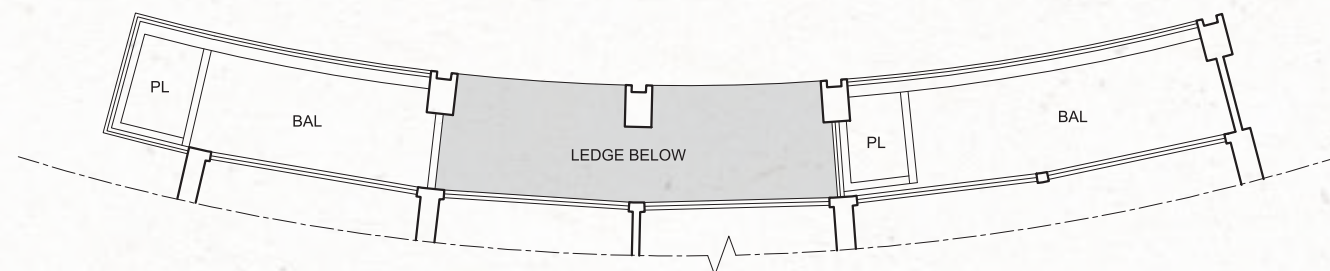
TYPE D3-a
119 sq m / 1,281 sq ft

#02-08; #06-08; #10-08; #14-08; #19-08;
#23-08; #27-08; #31-08; #35-08



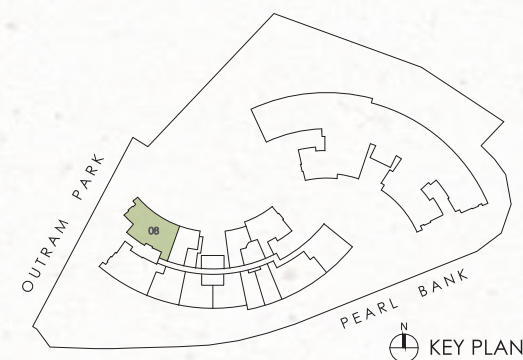
TYPE D3-b
111 sq m / 1,195 sq ft

#03-08; #05-08; #07-08; #09-08; #11-08;
#13-08; #15-08; #17-08; #20-08; #22-08;
#24-08; #26-08; #28-08; #30-08; #32-08;
#34-08; #36-08



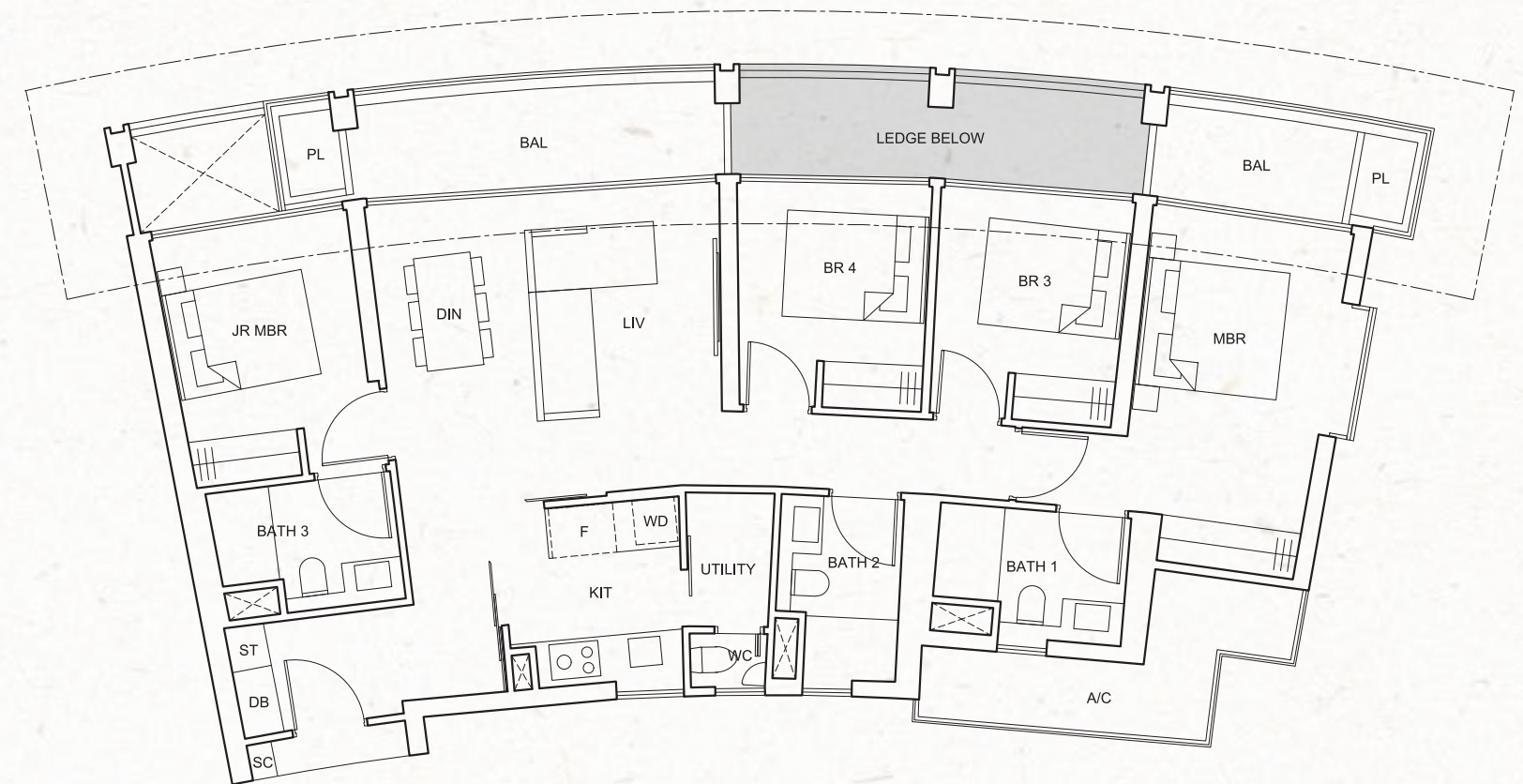
TYPE D3-c
119 sq m / 1,281 sq ft

#04-08; #08-08; #12-08; #16-08; #21-08;
#25-08; #29-08; #33-08; #37-08



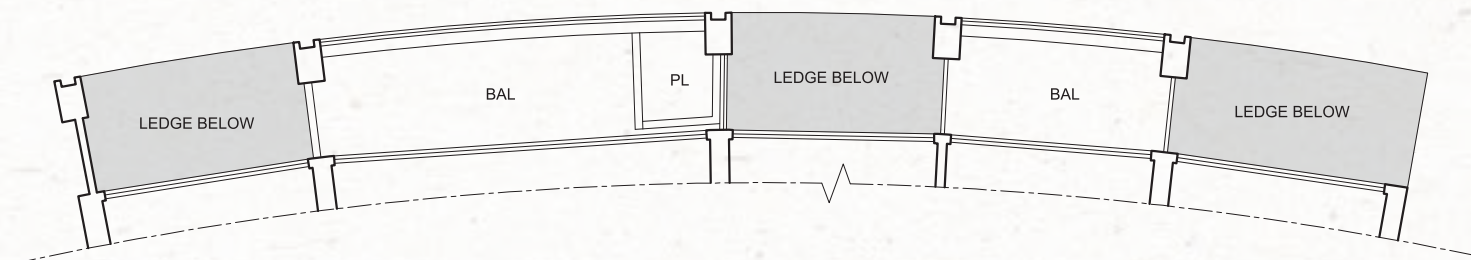
All floor areas indicated are inclusive of AC ledge, planters and balcony where applicable. The plans are subject to change as may be approved by the relevant authorities. All floor plans are approximate measurements only and subject to government re-survey. The balcony shall not be enclosed unless with the approved balcony screen. The installation and cost of the balcony screen shall be borne by the purchaser. For an illustration of the approved balcony screen, please refer to the diagram annexed hereto as "Annexure".

4-BEDROOM



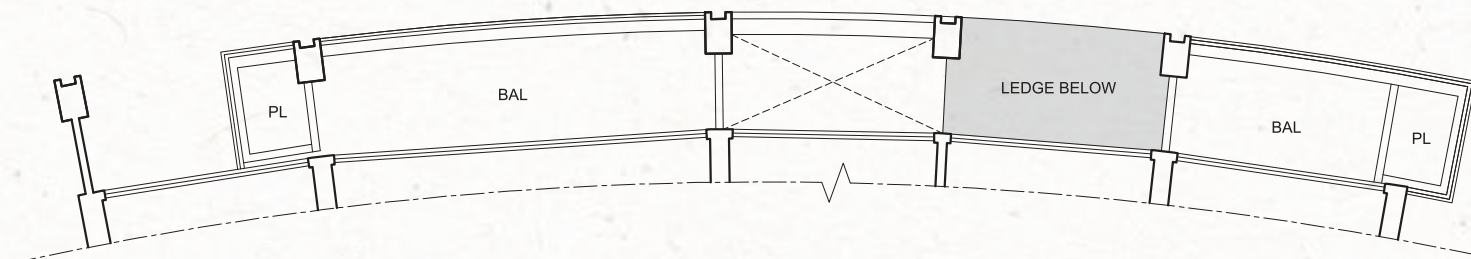
TYPE E1-a
133 sq m / 1,432 sq ft

#02-18; #06-18; #10-18; #15-18; #19-18;
#23-18; #27-18; #31-18; #35-18



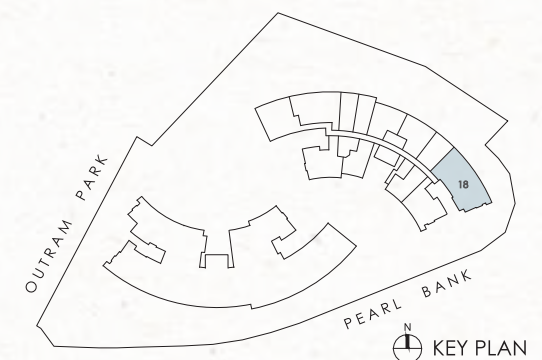
TYPE E1-b
130 sq m / 1,399 sq ft

#03-18; #05-18; #07-18; #09-18; #11-18;
#13-18; #16-18; #18-18; #20-18; #22-18;
#24-18; #26-18; #28-18; #30-18; #32-18;
#34-18; #36-18



TYPE E1-c
133 sq m / 1,432 sq ft

#04-18; #08-18; #12-18; #17-18; #21-18;
#25-18; #29-18; #33-18; #37-18



All floor areas indicated are inclusive of AC ledge, planters and balcony where applicable. The plans are subject to change as may be approved by the relevant authorities. All floor plans are approximate measurements only and subject to government re-survey. The balcony shall not be enclosed unless with the approved balcony screen. The installation and cost of the balcony screen shall be borne by the purchaser. For an illustration of the approved balcony screen, please refer to the diagram annexed hereto as "Annexure".



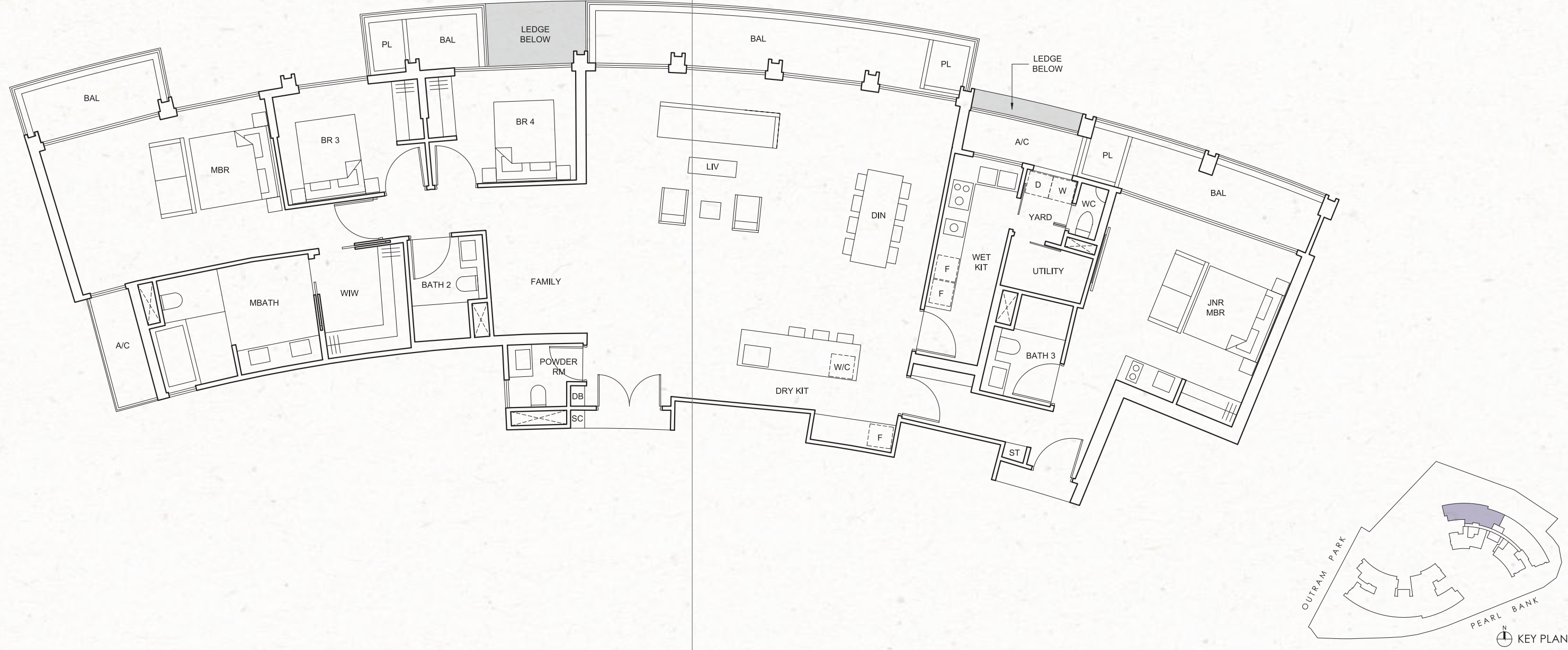
顶层豪宅蓝图

PENTHOUSE

TYPE F1
250 sq m / 2,691 sq ft
#38-18



TYPE F2
259 sq m / 2,788 sq ft
#38-13



All floor areas indicated are inclusive of AC ledge, planters and balcony where applicable. The plans are subject to change as may be approved by the relevant authorities. All floor plans are approximate measurements only and subject to government re-survey. The balcony shall not be enclosed unless with the approved balcony screen. The installation and cost of the balcony screen shall be borne by the purchaser. For an illustration of the approved balcony screen, please refer to the diagram annexed hereto as "Annexure".

TYPE F3
244 sq m / 2,626 sq ft
#38-06

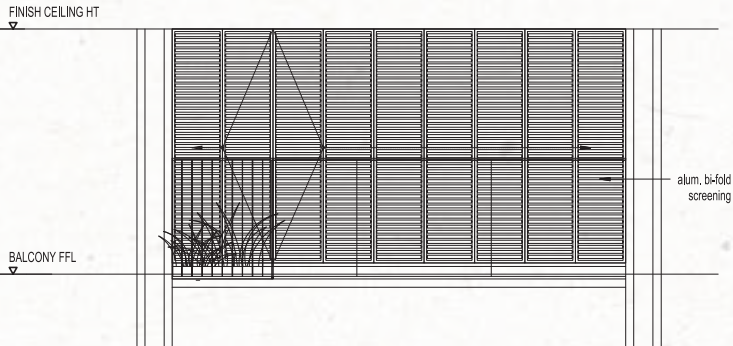


TYPE F4
258 sq m / 2,777 sq ft
#38-02

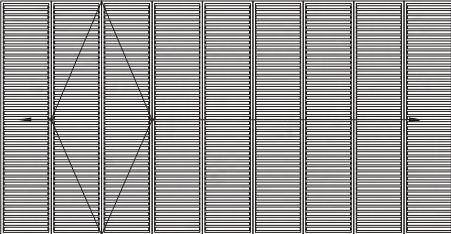


All floor areas indicated are inclusive of AC ledge, planters and balcony where applicable. The plans are subject to change as may be approved by the relevant authorities. All floor plans are approximate measurements only and subject to government re-survey. The balcony shall not be enclosed unless with the approved balcony screen. The installation and cost of the balcony screen shall be borne by the purchaser. For an illustration of the approved balcony screen, please refer to the diagram annexed hereto as "Annexure".

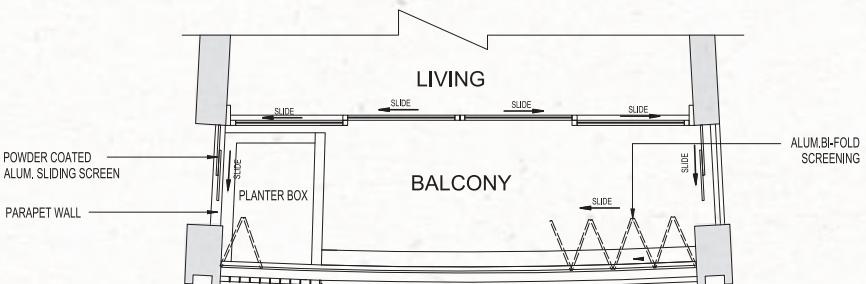
ANNEXURE



TYPICAL ELEVATION OF BALCONY WITH SCREEN



TYPICAL ELEVATION - BALCONY SCREEN



TYPICAL PLAN WITH BALCONY SCREEN

LEGEND

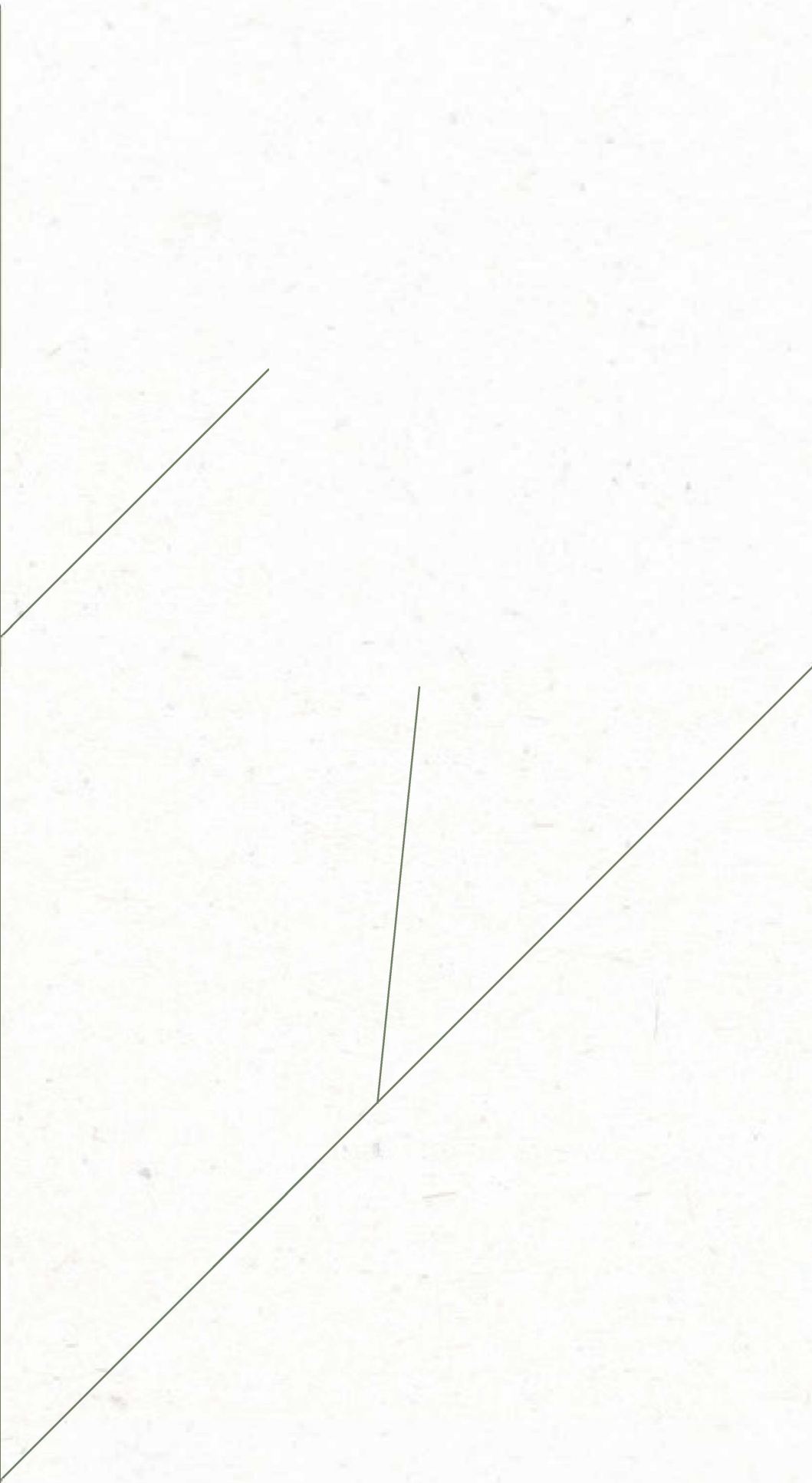


Wall not allowed to be hacked or altered

Note:

1. The balcony shall not be enclosed unless with the approved balcony screen.
2. The proposed balcony screens allow for natural ventilation within the balcony at all times
3. The installation and cost of the screen shall be borne by the Purchaser.

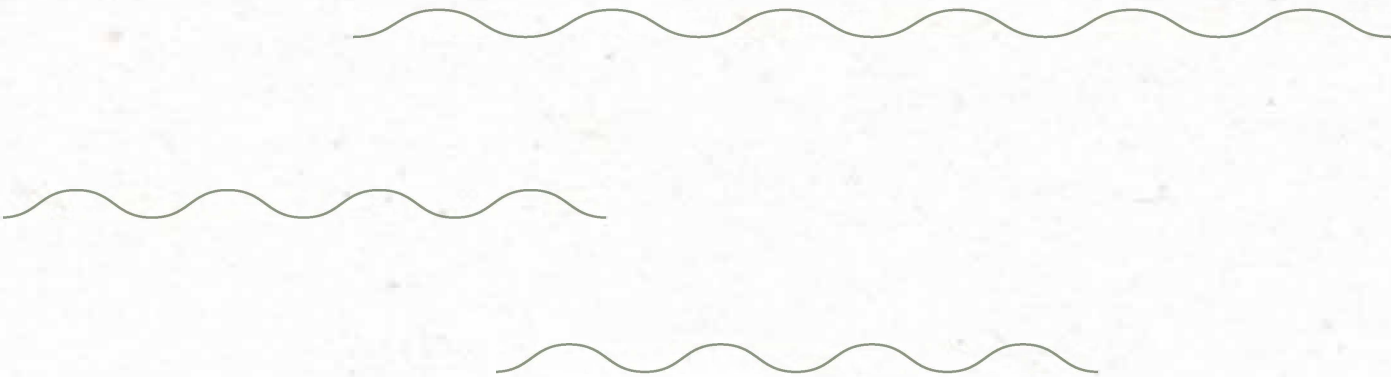




DEVELOPER: ARECA INVESTMENT PTE. LTD (199500924C) • DEVELOPER'S LICENCE NO.: C1313 • LOCATION: LOT(S) 00189L, TS 22, AT PEARL BANK / OUTRAM ROAD • TENURE: 99 YEARS WEF 1 MARCH 2019 • EXPECTED DATE OF VACANT POSSESSION: 31 DECEMBER 2023 • EXPECTED DATE OF LEGAL COMPLETION: 31 DECEMBER 2026

We have used reasonable care in preparing this brochure and neither our agents nor we will be held responsible for any inaccuracies in the contents of this brochure. Whilst we believe the contents of this brochure to be correct and accurate at the time of going to print, they are not to be regarded as statements or representations of facts. All information, specifications and plans herein contained may be subjected to change from time to time by us and/or the competent authorities as may be required and do not form part of an offer or contract. Renderings, depictions and illustrations are artistic impressions. Photographs do not necessarily represent as-built standard specifications. Floor areas are approximate measurements and are subject to final survey.

Printed on 50% Recycled paper.



凯德集团是亚洲知名的大型多元化房地产集团，总部设在新加坡，并在新加坡上市。截至2019年3月31日，集团管理资产超过1,030亿新元。凯德集团的投资组合横跨多元房地产类别，包括办公楼、购物中心、产业园、工业及物流地产、商业综合体、城镇开发、服务公寓、酒店、长租公寓及住宅。集团业务遍及全球30多个国家的200多个城市，以新加坡和中国为核心市场，并不断开拓印度、越南、澳大利亚、欧洲和美国等市场。

凯德集团的房地产投资管理业务规模也在全球领先。旗下共管理8支上市房地产投资信托基金(REITs)和商业信托，以及20多支私募基金。2002年推出新加坡首支上市房地产投资信托基金——凯德商用新加坡信托，发展至今，集团旗下的房地产投资信托基金和商业信托扩展到包括腾飞房产投资信托、凯德商务产业信托、雅诗阁公寓信托、凯德商用中国信托、腾飞印度信托、凯德商用马来西亚信托和腾飞酒店信托。

凯德集团于1994年进入中国，中国是集团的两大核心市场之一。经过25年的发展，凯德已在中国42座城市拥有/管理200多个项目。

目前，凯德在中国的总开发规模约2,300万平方米，管理的总资产近2,600亿元人民币。凯德致力于创新性地构建和实践综合体战略，以契合新型城镇化的趋势，实现社会、企业、个人的可持续发展，与中国共成长。
